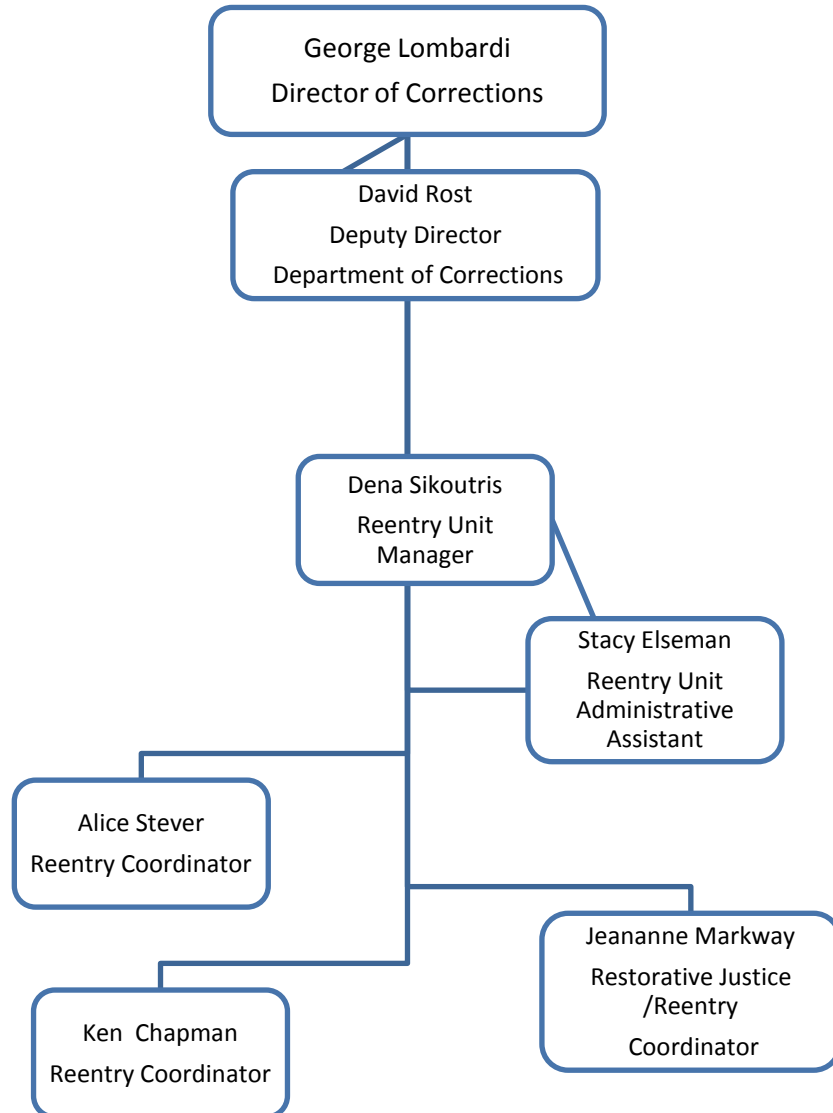


Reentry Unit Organizational Chart



Missouri Department of Corrections Reentry Unit



Reentry Unit Philosophy

Core Belief: Offender reentry is a philosophy which requires a system wide collaborative approach to improving public safety.

Vision: A Safer Missouri and the Standard of Excellence in Corrections. We desire to be the standard of excellence in the field of corrections. Through innovation and collaboration, we want to embrace changes that better serve Missouri communities impacted by criminal behavior and achieve a safer State.

Mission: To support and encourage the reentry and restorative justice efforts of the Department of Corrections, reentry stakeholders, and the community.

Approach: The development of a sustainable system of reentry programs, services and support system that begins at the first contact with the Department of Corrections and continue throughout an offender's transition to and stabilization in the community.

Personal Commitment: To serve internal and external reentry partners with honesty, integrity and respect for the individual and the organization.

Missouri Department of Corrections Reentry Unit Staff Responsibilities

Dena Sikoutris, Reentry Manager

(573) 522-1206

Dena.Sikoutris@doc.mo.gov

Responsibilities

- MRP Steering Team - Chair
- MRP Leadership Team – Chair
- MRP Conference Committee
- Budget/Contract Oversight
- Pathway to Change Oversight
- MRP Resource Liaison
- Website Oversight
- Kansas City Metropolitan Crime Commission
- Big Brothers/Big Sisters Contract
- St. Louis Reentry MOU
- Management of Reentry Unit Staff
- Grant Writing & Presentations

Stacy Elseman, Administrative Office Support Assistant

(573)526-1664

Stacy.Elseman@doc.mo.gov

Responsibilities

- Website Maintenance
- MRP Publication Oversight
- ICVC Certificates
- Restorative Justice Monthly Report
- Refer calls to appropriate Reentry Specialist
- Assist Reentry Unit with day-to-day operations

Alice Stever, Reentry Coordinator

(573) 522-6128

Alice.Stever@doc.mo.gov

Responsibilities

- Missouri Department of Social Services
- United Migrant Opportunity Services, National Farm Worker Job Program
- MRP Activity Report
- Social Security Administration (SSI/SSDI)
- Missouri Department of Health and Senior Services-Bureau of Vital Records (In-State Birth Certificates)
- Out of State Birth Certificate
- MRP Resource Liaison
- Community Reentry Team Resource Liaison
- Department of Veterans Affairs
- Department of Veterans Commission
- Medicaid Application Process
- Grant Writing & Presentations

Jeananne Markway, Restorative Justice Coordinator

(573) 526-6502

Jeananne.Markway@doc.mo.gov

Responsibilities

- Victims Services
- Restorative Justice Liaison
 - KidSmart
 - ParentLink
 - RJ Gardens
- Missouri Conference of the United Methodist Church—Reentry Circles
- ICVC Oversight
- MRP Regional Resource Liaison
- Pathway to Change Committee
- Grant Writing and Presentations

Ken Chapman, Reentry Coordinator

(573) 522-1935

Ken.Chapman@doc.mo.gov

Responsibilities

- Catholic Charities of Kansas City
- Missouri Department of Health and Senior Services—Bureau of Vital Records
- Missouri Department of Economic Development, Division of Workforce Development
- Missouri Department of Revenue
- Social Security Administration (Replacement Social Security Cards)
- Beauty for Ashes
- The Father Support Center (Department of Labor)
- The Father Support Center (Department of Adult Institution)
- State Technical College Liaison
- The Next Step/CoFFe!
- MRP Regional Resource Liaison
- Grant Writing and Presentations

Other correspondence can be directed to:

Missouri Department of Corrections
Reentry Unit

Attention: Stacy Elseman

2729 Plaza Drive

Jefferson City, MO 65109

(573) 526-1664

Stacy.Elseman@doc.mo.gov