

Jeremiah W. (Jay) Nixon, Governor
George A. Lombardi, Director



Missouri Department of Corrections **Annual Report 2014**



A Safer Missouri and the Standard of Excellence in Corrections

Message from the Director:



The goal of the Missouri Department of Corrections has always been to enhance public safety through efficient supervision and effective rehabilitative services that are provided to adult offenders. Programs offered to offenders by the Division of Probation and Parole, Missouri Reentry Process, and Restorative Justice are intended to reduce recidivism while teaching offenders about compassion and altruistic behavior. At some point in time, 97 percent of the incarcerated population will be released back to their communities in Missouri. Therefore, it is imperative that these rehabilitative programs are successful.

The department has been at the forefront of developing positive rehabilitative programs and fostering partnerships with organizations throughout Missouri that help provide efficient and effective rehabilitative programming, such as the state's Drug Court program and other community service initiatives developed by the Division of Probation and Parole and the Missouri Reentry Process. Several of these programs rely on the dedication of our Volunteers in Corrections in order to be successful. Last year, more than 1,500 volunteers recorded tens of thousands of hours of volunteer service. Our partnerships and volunteers serve as a vital link to the community, while making a positive impact on the lives of offenders that are incarcerated or being supervised on probation or parole.

In the last three years, our Restorative Justice Garden Program has been a model for success, donating hundreds of tons of fresh produce to local food pantries, shelters and organizations. When I was appointed director of the department in 2009, Missourians were faced with a challenging economy, and I encouraged our institutions and three community supervision centers to increase production in order to help them. That effort still continues. In 2014, our gardens set a record by donating nearly 180 tons of produce, shattering the previous record set in 2013 by nearly 17 tons.

One program that has far exceeded my expectations has been our Puppies for Parole program. Last year, the program achieved its 2,500th adoption and had several dogs certified as helper dogs in our Advanced Puppies for Parole program. These certified helper dogs are utilized by nursing and veteran's homes, individuals with special needs, and counselors who want to use therapy dogs as a means to help their clients. In 2014, Advance Puppies for Parole dogs made its way into the courtroom, as two county courts adopted dogs trained to help children testify during difficult cases. I am truly amazed at the number of success stories this program yields as it continues to reduce the number of dogs euthanized or living out their lives in cages, while providing positive and meaningful restorative justice initiatives for our incarcerated offenders.

As I enter my seventh year as the department's director, I am constantly reminded of the hard work put in by our more than 11,000 employees. Without their dedication, the success of our rehabilitative programs would not be possible. I look forward to the challenges and opportunities that 2015 will bring, and take pride in overseeing our dedicated employees and the goals they strive for in keeping with our mission of enhancing public safety while working at being leaders in the field of corrections.

George A. Lombardi
Director





Top 2014 Accomplishments

Puppies for Parole reaches milestone 2,500th adoption

Since its inception in 2010, Puppies for Parole (P4P) has helped find suitable homes for more than 2,500 unadoptable dogs, while teaching offenders about compassion and altruism.

With the help of donations and our partnership with COMTREA, the program has evolved to provide advanced training at six adult institutions for dogs to assist those with special needs. Among those trained, Natalie, a court dog serving in the 23rd Circuit Court in Jefferson County, has proven to be a valuable asset to children testifying during difficult cases.

Also in 2014, two members of Battersea Dogs & Cats shelter of London came to Missouri to get an up-close look at the P4P program. The main focus of their visit was to learn as much as they could about the program for the purpose of emulating it in Her Majesty's Prisons.



Natalie



Restorative Justice Gardens set record in 2014

The Restorative Justice Garden Program donated nearly 180 tons of fresh produce in 2014 to local food pantries, shelters, churches, nursing homes and school districts throughout the state, eclipsing last year's donation of more than 163 tons.

The department's Restorative Justice Garden Program operates without the assistance of tax-payer money and grows a variety of produce every year at 19 of 20 adult institutions and three community supervision centers of the Division of Probation and Parole.

Offenders cultivate the garden plots in April, with harvesting ending in late fall. All of the seeds and plants for the gardens are donated, and in return, all the produce grown is then donated to local food pantries, shelters, churches and school districts.

In addition to donating produce, several institutions donated whole plants to various outreach organizations in Missouri.

Department donates trees to help Joplin recovery effort

The Missouri Department of Corrections donated 155 healthy trees in 2014 to help with the Joplin recovery effort.

The city lost more than 15,000 trees in the EF-5 tornado that swept through the city in May 2011. In an effort to help with the recovery, volunteer offenders in the Restorative Justice Program at the Western Reception, Diagnostic and Correctional Center (WRDCC) in St. Joseph, Mo., began tending to a variety of trees in 2011 that were donated by the George White Nursery in Licking, Mo.

The success of the project led to WRDCC planting approximately 150 more trees to make it an ongoing effort. Their goal is to plant 100 trees every year and in about three years they hope to be able to start donating up to 100 trees annually to local community organizations or other areas that have been devastated by natural disasters.



A Safer Missouri and the Standard of Excellence in Corrections



Top 2014 Accomplishments

OCC receives award from Missouri Recycling Association



The Ozark Correctional Center (OCC) was recognized in 2014 for “Outstanding Leadership in Organics Recycling” by the Missouri Recycling Association (MORA). OCC manages a large scale recycling center in support of 674 offenders and 230 staff members. OCC diverts and recycles nearly 85 percent of its waste and scraps, saving the facility nearly \$10,000 each year on landfill hauling costs.

Equipment utilized to process this material includes an in-vessel composting machine capable of handling 1,000 pounds of organics, a vertical baler, and a skid loader. Housing units and offices are supplied with containers for the collection and transport of waste material to the recycling center. Offender workers sort and separate all items to be recycled or disposed of as trash.

MORA President Dan Imig said, “Ozark Correctional Centers’ efforts have paid off in a big way, both to the facility and the environment.”

Fletcher, Berry named State Employees of the Month

Probation and Parole Officer Heather Fletcher and Employee Health Nurse Edna Berry were named the State Employee of the Month for May and November, respectively.

Fletcher, employed at the Probation and Parole District 21 Office in Branson, was recognized for her work with Stone County Drug and DWI Court programs, bringing together community partners to make a difference.



Edna Berry

Berry, Employee Health Nurse for the Northeast Correctional Center and Women’s Eastern Reception, Diagnostic and Correctional Center, was recognized for setting up vaccination clinics to prevent Tetanus, Diphtheria and Pertussis, resulting in an approximate savings of \$13,000 to the department and saving the state in worker’s compensation costs.



Heather Fletcher



2014 Employees of the Month

January 2014

Teri Penland, Corrections Officer I

February 2014

Joan Reinkemeyer, Corrections Manager II

March 2014

Samona Kosfeld, Human Relations Officer I

April 2014

Heather Fletcher, P & P Officer II

May 2014

Sandy Carr, Office Support Assistant

June 2014

Paul Blakemore, Factory Manager II

July 2014

Adam Calvin, Corrections Officer II

August 2014

Sherry Pickett, Corrections Officer III

September 2014

Susan Wood, Fiscal Admin Manager II

October 2014

Edna Berry, Employee Health Nurse

November 2014

Josh Wyrick, Investigator I

December 2014

Mike Dotson, P & P Officer II

A Safer Missouri and the Standard of Excellence in Corrections

Division of Adult Institutions

Dave Dormire, Director

The Division of Adult Institutions is responsible for the management of the state's 20 adult correctional institutions. The division operates safe, secure, and humane institutions for the confinement of individuals committed by the courts to serve a prison sentence. Incarcerated offenders engage in work, school or rehabilitative programs throughout their confinement in order to prepare them to be productive, law-abiding citizens upon their release.

Offenders provide assistance to communities in need

In 2014, offenders from several adult institutions provided assistance to communities that were struck by natural disasters. In April, a crew of 14 offenders from the Ozark Correctional Center spent three days removing downed limbs, brush and debris from roadways and property in Ava, Mo., after the town received damage due to high winds from a storm. In May, an offender work release crew from the Western Missouri Correctional Center assisted in the cleanup in Orrick, Mo., for six days after a tornado tore roofs off houses and uprooted trees. In July, offenders from the Women's Eastern Reception, Diagnostic and Correctional Center and the Northeast Correctional Center helped with sandbagging efforts in Clarksville, Mo. Through the efforts of offenders and volunteers, a flood wall three-feet high by three-feet wide and 350-feet long was built, saving homes and small businesses in the town along the Mississippi River.



Ozark Correctional Center offenders in Ava

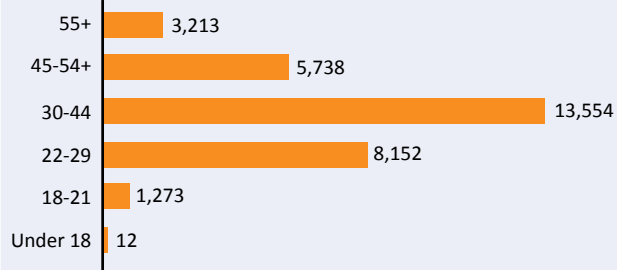
Prison Demographics

31,942 incarcerated offenders*

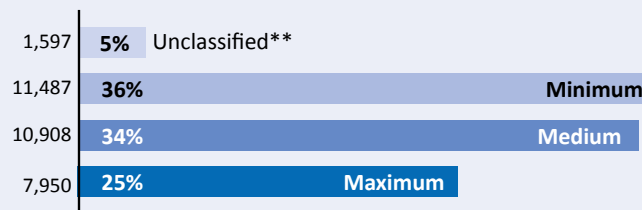
*as of Dec. 31, 2014

**Unclassified offenders are not yet assigned a custody level at the time of this snapshot.

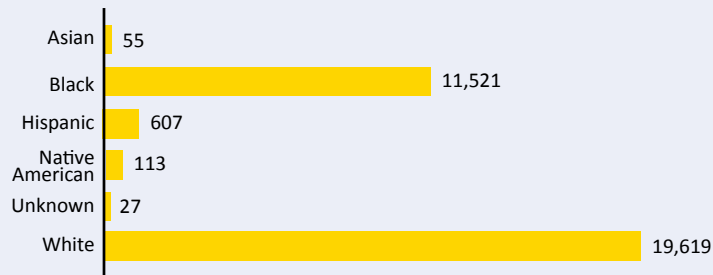
Age



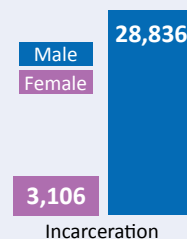
Population by custody level



Race



Gender



A Safer Missouri and the Standard of Excellence in Corrections

Office of the Director | 2014 Top Accomplishments | Adult Institutions | Human Services | Offender Rehabilitative Services
Probation and Parole | Statistics | Budget | Directory





Division of Human Services

Cari Collins, Director

The Division of Human Services provides support to the Division of Adult Institutions, Division of Offender Rehabilitative Services and Division of Probation & Parole. The Division of Human Services is tasked with recruiting a diverse professional work force, maintaining that qualified work force, improving the work environment of employees, and the communication between management and staff.

CIT program gives officers tools to manage mentally ill offenders

The department held a weeklong special training session in 2014 that was geared toward bringing a Crisis Intervention Team program to Missouri's prisons. Corrections-based Crisis Intervention Team (CIT) programs provide an evidence-based strategy to manage mentally ill offenders safely, securely and successfully. The CIT model has been adapted to correctional settings to maintain institutional safety through reduced uses of force and de-escalating behavioral issues. CIT aims to reduce the overall use of force and other physical interventions, cutting down on physical, supervisory, administrative, and legal requirements. CIT is also effective with other special populations which include offenders that are elderly, physically and intellectually disabled, and developmentally delayed.



From left: Scott O'Kelley, Captain Richard Corser and Shelly Carson

Captain Richard Corser from Jefferson City Correctional Center and Scott O'Kelley of Division of Offender Rehabilitative Services attended CIT development training conducted by the National Institute of Corrections (NIC) at the Aurora, Colorado training academy in 2013. Subsequently, the department applied for and received assistance by the NIC to provide a 40-hour CIT training session. Captain Corser acted as CIT Coordinator and Shelly Carson from the Training Academy was the Curriculum Design Specialist. Other partnerships developed for planning, piloting and sustaining the department's CIT program include: Missouri CIT Council, NAMI, Missouri Coalition for Community Behavioral Healthcare, Missouri Department of Mental Health and MU School of Social Work.

Volunteers in Corrections play vital role in offender programs

In 2014, nearly 1,600 Volunteers in Corrections (VIC) assisted the department by providing nearly 59,000 hours of volunteer service in the Division of Adult Institutions. VICs also volunteered thousands of hours of service for programs in the Division of Probation & Parole.

Volunteers serve as a vital link to the community in conjunction with the Missouri Reentry Process and Restorative Justice, which assists men and women returning to the community following incarceration. Their efforts contribute to public safety and have a positive impact on the lives of offenders. VICs also help institutional chaplains in religious programming, pastoral counseling, and provide spiritual guidance.



VIC Cynthia Hitschler teaches sewing to offenders at MECC

A Safer Missouri and the Standard of Excellence in Corrections

Office of the Director | 2014 Top Accomplishments | Adult Institutions | Human Services | Offender Rehabilitative Services
Probation and Parole | Statistics | Budget | Directory

Division of Offender Rehabilitative Services

Matt Sturm, Director

The Division of Offender Rehabilitative Services is responsible for the development of treatment and service programs for offenders. These programs include offender health care (medical and mental health), sex offender assessment and treatment, adult education and workforce readiness, library services, substance abuse services, and Missouri Vocational Enterprises.

Offenders continue to take advantage of educational opportunities

Offenders incarcerated in the Missouri Department of Corrections (DOC) take advantage of educational opportunities by obtaining high school equivalency certificates (HSE) and career and technical certificates (CTE). In 2014, more than 1,750 offenders incarcerated in institutions and treatment centers obtained their HSE certificates, topping last year's total of 1,692. The DOC has CTE programs at nine adult institutions and provides certifications from the Department of Labor, the National Center for Construction and Educational Research and Certiport. Offenders also have the opportunity to earn certificates and licenses in cosmetology, food handling/management and nursing assistance. These programs provide 360 hours of classroom and practice instruction. In 2014, offenders incarcerated in institutions earned 930 certificates from 17 programs, which is the highest number of certificates earned in the past five years.



MVE partners with Missouri counties

Missouri Vocational Enterprises has provided Missouri cities and counties with products and services for decades. In 2014, MVE services were called upon to provide the citizens of Clark County with furnishings for their new courthouse in Kahoka, Mo.

The custom wood furnishings built by MVE at the Jefferson City Correctional Center Furniture Factory included the Circuit Court and Associate Court benches, the Circuit Court jury box, the Associate Court desk, the Circuit Recorder desk, six catalogue shelves and two Circuit Court room dividers. MVE also provided office desks, chairs and tables for various offices in the courthouse.



In addition, MVE's Furniture Refinishing factory refinished and reupholstered multiple benches, chairs and tables from the former courthouse building. MVE restored 11 chairs that are more than 100 years old.

The MVE program was established by state statute to create meaningful job training for incarcerated offenders. MVE utilizes offender labor, along with supervisors and administrative staff, to provide quality products and services to state agencies and other not-for-profit entities. MVE takes great pride in producing a wide variety of quality products and services. But the most important MVE product is a successful offender that returns to society with a skill that can benefit the community.

A Safer Missouri and the Standard of Excellence in Corrections

Office of the Director | 2014 Top Accomplishments | Adult Institutions | Human Services | Offender Rehabilitative Services
Probation and Parole | Statistics | Budget | Directory



Division of Probation & Parole

Ellis McSwain, Chairman

The Board of Probation and Parole governs the release of offenders from confinement in the Division of Adult Institutions by means of parole or conditional release. The board determines whether placement in a residential facility, community release center or on electronic monitoring is appropriate. The board establishes special conditions in order to address an offender's specific needs, ultimately reducing risk and improving success under supervision. The board conducts investigations and provides information to the governor on all applications for pardons, commutations of sentence, reprieves or restorations of citizenship.

District offices organize community cleanups throughout Missouri

In 2014, several district offices for the Division of Probation & Parole coordinated efforts throughout Missouri, where offenders that are on probation or parole can help out in their communities. A probation and parole officer at the District 10R Office in Springfield organized and volunteered her time to supervise four current Drug Court offenders as they cleaned up the local Victims' Garden as a form of sanction for recent violations. Other efforts by district offices included: cleaning up highways, parks, vacant lots, and other various community service programs.



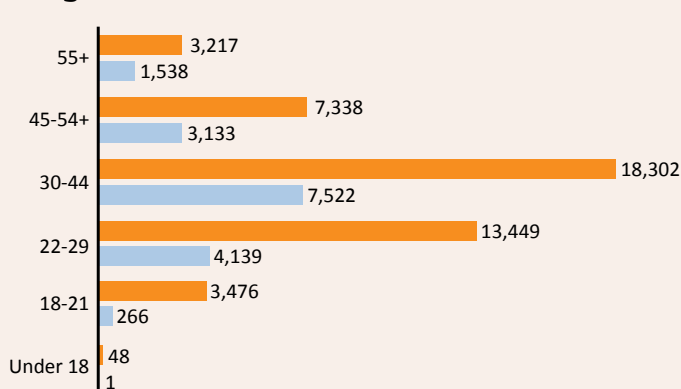
P&P Demographics

62,429 offenders*

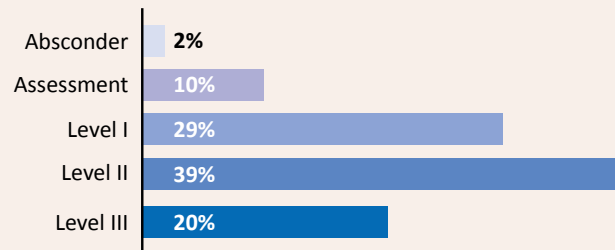
*as of Dec. 31, 2014

**Level III is the most intensive of supervision and Level I is the least intensive. Assessment is the first 90 days of supervision. An absconder is an offender who has not reported for up to 90 days.

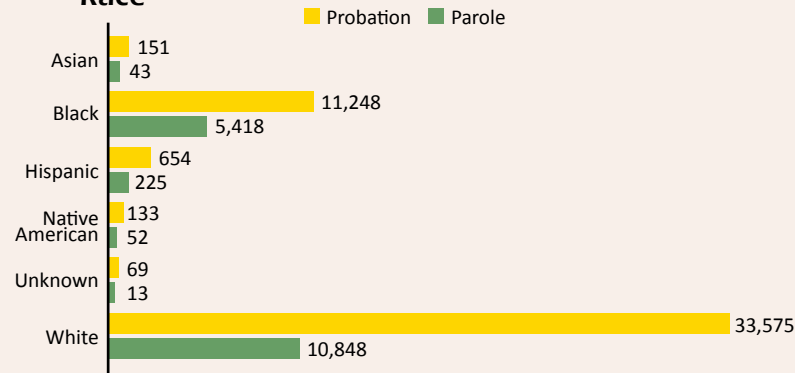
Age



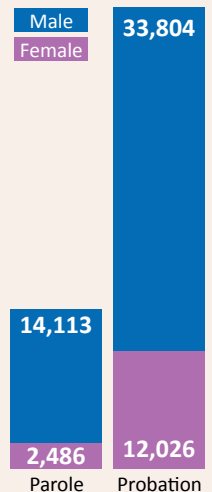
Field population by supervision level**



Race



Gender



Most Serious Offense**PERSON**

includes murder, rape, robbery, assault, child molestation, elder abuse, arson 1

Prison**16,525****Probation*****7,258****Parole*†****4,752****PROPERTY**

includes burglary, stealing, forgery, arson 2

7,028**13,725****5,273****DRUGS**

includes possession, sales, manufacture, trafficking

5,845**14,996****4,884****DWI****1,160****4,183****689****OTHER**

includes weapons, public order offenses and nonsupport

1,384**5,668****1,001****TOTAL****31,942****45,830****16,599**

on all offenders as of Dec. 31, 2014 • * includes interstate *includes community release centers

TOP 5 crimes of incarcerated offenders

Offense	Charge Code	Count	Avg. Yrs. Sentence*
distribution/delivery/manufacture of a controlled substance	32465	2,594	9.4
first-degree robbery	12010	2,482	16.3
possession of a controlled substance	32450	2,327	5.6
second-degree burglary	14020	2,112	6.2
second-degree murder	10031	1,996	24.8

*Life sentences calculated at 30 years and sentences over 45 years calculated at 45.

TOP 5 crimes of P&P offenders

Offense	Charge Code	Count	Avg. Probation*
possession of a controlled substance	32450	11,710	4.5
theft—\$500/more-less \$25,000	15021	4,758	4.8
distribution/delivery/manufacture of a controlled substance	32465	4,732	4.8
second-degree burglary	14020	4,566	4.7
dwi/alcohol	47410	2,870	4.8

*Term length in years applies to offenders serving a probation sentence.

Inspector General

The Office of the Inspector General is charged with objectively examining department operations. This is accomplished through the Investigations Unit and the Intelligence Unit. The Office of Inspector General is the investigative arm of the department and conducts investigations in response to reports of suspected violation of statute and department policy and procedure.

Criminal cases**submitted for prosecution**

	Cases submitted	Charges filed	Cases declined	Still pending review
2013	530	180	245	105
2014	528	102	160	266

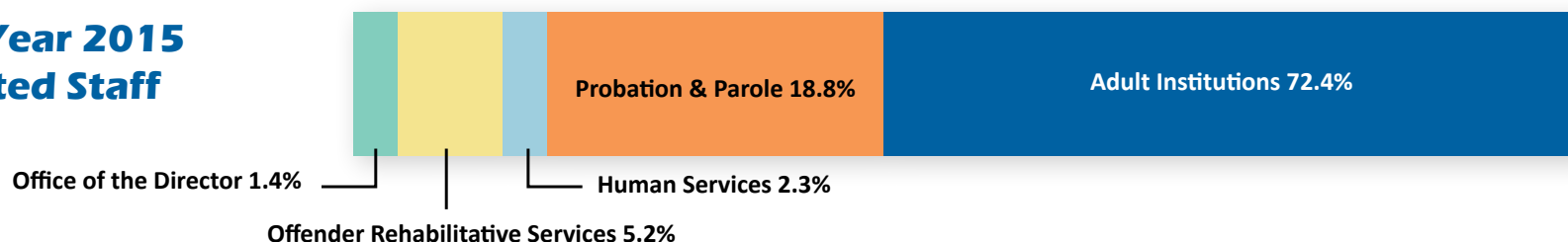


Total Budget by Division*

Office/Division	fy2015	fy2010	fy2005
Adult Institutions	\$290,779,012	\$258,457,076	\$235,307,483
Offender Rehabilitative Services	\$207,971,365	\$189,102,111	\$147,863,142
Human Services	\$118,233,674	\$106,202,080	\$82,043,731**
Probation & Parole	\$93,334,805	\$95,079,885	\$79,530,680
Office of the Director	\$14,837,617	\$16,002,941	\$30,456,133
Totals	\$725,156,473	\$664,844,093	\$575,201,169

*This reflects the monies allocated within the DOC budget and does not reflect related costs (such as fringe benefits) that are in other state agency budgets.

**In fiscal year 2005, monies in the Division of Human Services included food purchases of \$24.9 million and fuel and utilities of \$25.5 million

Fiscal Year 2015
Budgeted Staff

Average Per Diem Costs

Prison	Probation & Parole*	Residential Facility**	Electronic Monitoring
Total Per Diem*	General Community Supervision	plus general supervision cost	plus general supervision cost
\$57.42	five general community supervision levels		
Direct Cost [†]			
\$16.73	\$6.72	\$82.29	\$15.52

*includes fringe benefits and costs in other agency budgets **residential facilities include community release and supervision centers

[†]includes an offender's healthcare, wage, discharge costs, food costs, and operational expense and equipment

A Safer Missouri and the Standard of Excellence in Corrections

Office of the Director | 2014 Top Accomplishments | Adult Institutions | Human Services | Offender Rehabilitative Services
Probation and Parole | Statistics | Budget | Directory



DIVISION of ADULT INSTITUTIONS

Division Director Dave Dormire	573-526-6524
2729 Plaza Drive, Jefferson City 65102	
Algoa Correctl Ctr	573-751-3911
8501 No More Victims Rd, Jefferson City 65101	
Boonville Correctl Ctr	660-882-6521
1216 E Morgan St, Boonville 65233	
Chillicothe Correctl Ctr	660-646-4032
3151 Litton Road, Chillicothe 64601	
Crossroads Correctl Ctr	816-632-2727
1115 E Pence, Cameron 64429	
Eastern Reception, Diagnostic & Correctl Ctr	573-358-5516
2727 Hwy K, Bonne Terre 63628	
Farmington Correctl Ctr	573-218-7100
1012 W Columbia, Farmington 63640	
Fulton Reception & Diagnostic Ctr	573-592-4040
PO Box 190, 1393 Hwy O, Fulton 65251	
Jefferson City Correctl Ctr	573-751-3224
8200 No More Victims Rd, Jefferson Cy 65101	
Maryville Treatmnt Ctr	660-582-6542
30227 US Hwy 136, Maryville 64468	
MO Eastern Correctl Ctr	636-257-3322
18701 Old Hwy 66, Pacific 63069	
Moberly Correctl Ctr	660-263-3778
PO Box 7, 5201 S. Morley, Moberly 65270	
Northeast Correctl Ctr	573-324-9975
13698 Airport Road, Bowling Green 63334	
Ozark Correctl Ctr	417-767-4491
929 Honor Camp Ln, Fordland 65652	
Potosi Correctl Ctr	573-438-6000
11593 State Hwy O, Mineral Point 63660	
South Central Correctl Ctr	573-674-4470
255 Hwy 32 West, Licking 65542	
Southeast Correctl Ctr	573-683-4409
300 East Pedro Simmons Dr, Charleston 63834	
Tipton Correctl Ctr	660-433-2031
619 N Osage Ave, Tipton, MO 65081	
Western MO Correctl Ctr	816-632-1390
609 East Pence Rd, Cameron, MO 64429	
Western Reception, Diagnostic & Correctl Ctr	816-387-2158
3401 Faraon, St. Joseph 64506	
Women's Eastern Reception, Diagnostic & Correctl Ctr	573-594-6686
1101 E Hwy 54, Vandalia 63382	

DOC CENTRAL OFFICE Switchboard & General Information

2729 Plaza Drive, Jefferson City, MO 65109 • 573-751-2389

DIVISION of PROBATION & PAROLE

Central Office Switchboard & General Information	573-751-8488
3400 Knipp Drive • Jefferson City, MO 65109	
Division Director Ellis McSwain	573-526-6551

Regional, District & Satellite Probation & Parole Offices

Dist 1—St. Joseph	816-271-3131	Dist 10—Springfield	417-888-4203
3305 Faraon St 64506		2530 S. Campbell • Ste H 65807	
Satellite •—Maryville	660-582-4799	Dist 10R—Spqfld	417-895-5700
115 E. 4th St 64468		1735 W. Catalpa • Ste A 65807	
Dist 2—Cameron	816-632-3781	Dist 11—Rolla	573-368-2233
207 E. McElwain, Suite B 64429		1105 Kingshighway 65401	
Dist 3—Hannibal	573-248-2450	Satellite • Steelville	573-775-3311
2002 Warren Barret Dr. 63401		101 S. 1 st St. 65565	
Dist 4—KC	816-482-5882	Dist 12—Farmington	573-218-5006
1730 Prospect • 2 nd Floor 64127		1430 Doubet Rd 63640	
Dist 4B—KC	816-889-7420	Dist 13—West Plains	417-256-6178
1828 Walnut • 9 th Floor 64108		1580 Imperial Center 65775	
Dist 4C—KC Central	816-889-3322	Dist 14—Sikeston	573-472-5353
8800 Blue Ridge Blvd., Ste. 300A 64138		102 Arthur Street 63801	
Dist 4W—KC West	816-753-8320	Satellite • New Madrid	573-748-2464
1330 Brush Creek 64110		350-C US Highway 61 63869	
Western Regional—KC	816-889-7600	Dist 15—Hillsboro	636-789-3392
Fletcher Daniels Building		4621 Yeager Road 63050	
615 E. 13th St., Ste. 110 64106		Dist 16—Union	636-583-8933
Dist 5—Warrensburg	660-543-7920	3 Truman Court 63084	
505 N. Ridgeview Dr • Ste D 64093		Dist 17—St. Charles	636-940-3333
Dist 6—Columbia	573-441-5862	211 Compass Point Drive 63301	
1500 Vandiver • Ste 110 65202		Dist 18—Moberly	660-263-3762
Dist 7B—St. L Probation	314-340-6999	1150 S. Morley 65270	
1114 Market • Room 200 63101		Satellite • Macon	660-385-5731
Dist 7C—St. L Central	314-340-7240	1718 Prospect Dr • Ste A 63352	
111 N. 7 th • Room 150 63101		Satellite • Kirksville	660-785-2430
Dist 7S—St. L South	314-256-4888	516 South Main 63501	
3101 Chouteau 63103		Dist 19—Liberty	816-792-0793
Dist EC—St. L	314-877-1000	910 Kent, Liberty 64068	
220 South Jefferson 63103		Dist 20—Camdenton	573-346-2878
Dist EP—St. L	314-877-1000	409 W US Highway 54 65020	
220 South Jefferson 63103		Dist 21—Branson	417-334-5613
ERA—Eastern Reg Annex	314-877-1176	2720 Shepherd of the Hills Exp • Ste A 65616	
220 South Jefferson • 2 nd Floor 63103		Dist 22—Cape Girardeau	573-290-5820
Dist 8C—St. L Co	314-340-3801	3463 Armstrong 63703	
9441 Dielman Rock Isl Industrial Dr 63132		Satellite • Perryville	573-547-9285
Dist 8E—St. L Co	314-475-7977	12 East Wichern 63775	
4040 Seven Hills Rd 63033		Dist 23—Kennett	573-888-4900
Dist 8N—St. L Co N.	314-877-2602	1401 Laura Dr. 63857	
8501 Lucas & Hunt Blvd 63163		Dist 24—Independence	816-795-6055
Dist 8S—St. L Co S.	314-416-2884	14440 East 42 nd St 64055	
7545 S. Lindbergh • Ste 120 63125		Dist 25—Poplar Bluff	573-840-9555
Dist 9—Joplin	417-629-3200	1441 Black River Ind. Park Dr. 63901	
1919 Rangeline Road 64801			

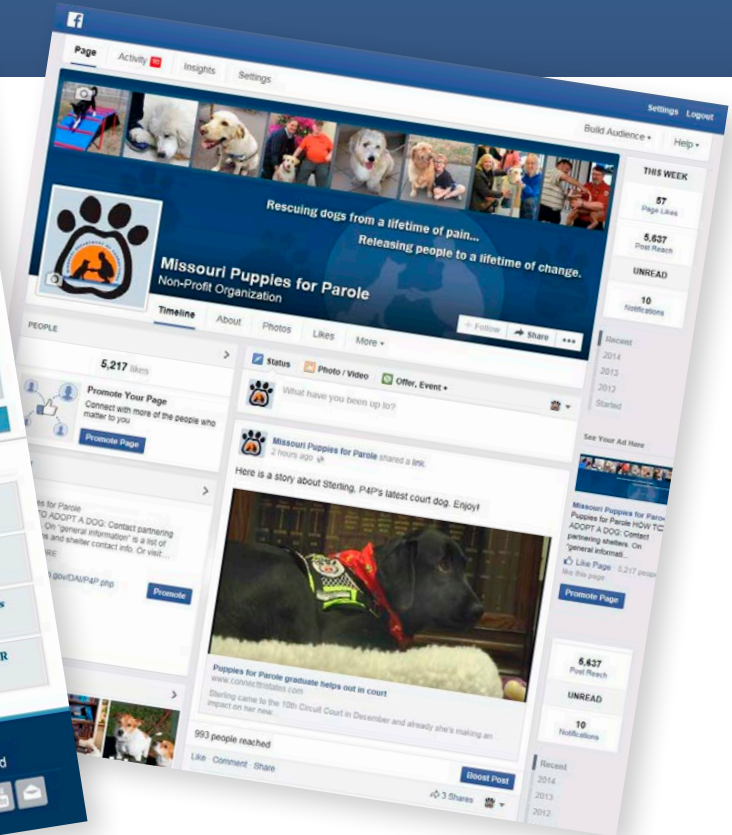
DIVISION of OFFENDER REHABILITATIVE SERVICES

Division Director Matt Sturm	573-526-64932729
Plaza Drive, Jefferson City 65102	
Cremer Therapeutic Treatment Center	573-592-4013
689 Highway O, Fulton 65251	
Dist 26—Fulton	573-592-4061
1397 Highway O 65251	
Dist 27—Jefferson City	573-751-4949
2705 W. Main 65109	
Dist 28—Belton	816-322-1166
836 North Scott 64012	
Dist 29—Sedalia	660-530-5530
205 Thompson Road 65301	
Dist 30—Nevada	417-448-1250
330 South Prewitt 64772	
Dist 31—Caruthersville	573-333-2809
PO Box 940, 911 Hwy 84 W 63830	
Dist 32—Lexington	660-259-3465
1102 Main St 64067	
Satellite • Marshall	660-831-5238
1239 Santa Fe Trail • Ste 300 65340	
Dist 33—Neosho	417-451-5322
1845 Laquesta Drive 64850	
Dist 34—Lake Ozark	573-964-6748
101 Crossings West, Suite 103 65049	
Dist 35—Lebanon	417-532-6224
300 South Jackson 65536	
Dist 36—Potosi	573-438-3448
326 East High St • Ste 1 63664	
Dist 37—Dexter	573-624-9434
1003 Wildwood • Ste A 63841	
Dist 38—Troy	636-528-5821
311 Travis Boulevard 63379	
Dist 39—Trenton	660-359-3227
1601 East 30 th 64683	
Satellite • Brookfield	660-258-7916
301 Burnham 64628	
Dist 41—Charleston	573-683-3673
305 South Cooper 63834	
Dist 42—Nixa	417-724-1344
301 E. CC Highway • Ste 4 65714	
Dist 43—Aurora	417-678-0832
27 W. Locust 65605	
Kansas City Community Release Center	816-842-7467
651 Mulberry St 64101	
St. Louis Community Release Center	314-877-0300
1621 North First St 63102	





Missouri Department of Corrections



For more information about the Missouri Department of Corrections, please visit doc.mo.gov.
If you're interested in our Puppies for Parole program, you can visit our facebook page at www.facebook.com/MissouriPuppiesforParole.