

Jeremiah W. (Jay) Nixon, Governor
George A. Lombardi, Director



Missouri Department of Corrections **Annual Report 2015**



A Safer Missouri and the Standard of Excellence in Corrections

Message from the Director:



As I enter my eighth year as the director of the Missouri Department of Corrections, our commitment to enhancing public safety through efficient supervision and effective rehabilitative services remains paramount. At the core of that commitment is our nearly 11,000 employees, who are dedicated professionals that serve a significant role in Missouri's criminal justice system and yet remain one of the state's most underrated assets.

In 2015, four employees were recognized for their selfless acts of heroism in coming to the aid of their co-workers and acting without regard for their own personal safety in an attempt to save or protect a human life. Corrections Officer Nathan Box became the first employee of the department to be awarded the Missouri Medal of Valor, the state's highest public safety award, for his actions in stopping an assault by an offender against a department employee at the South Central Correctional Center. Corrections

Officers Dustin Sharp and Carmen Riley, and Function Unit Manager Janita Bisel were awarded the department's Director's Medal of Valor for their actions in assisting an employee that was being assaulted at two different correctional facilities. These four employees are the embodiment of the department's values and commitment to the criminal justice system in Missouri. And I cannot shower them with enough praise for the service and sacrifices they made in coming to the aid of their co-workers. But not all our employees receive the recognition they deserve for the work they achieve.

Last year several of our employees from the Divisions of Adult Institutions and Probation and Parole, along with others in our Planning and Reentry section, were given the task of transitioning the Kansas City Community Release Center into a minimum-security facility for adult males in order to effectively manage an increase in the incarcerated population. We announced our transition plan in February and set a target date of September to begin admitting the first offenders at the new correctional center. During the transition period, staff worked countless hours to ensure the target date was met and the transition was smooth. We began accepting incarcerated offenders in September at the newly named Kansas City Reentry Center thanks, in large part, to the dedication and commitment of our employees.

Since my appointment as director in 2009, I have taken great pride in overseeing this department, its employees and all the goals they set for themselves that keep with our mission of enhancing public safety, reducing recidivism, and developing positive and impactful offender programming. I look forward to the challenges and accomplishments that lie ahead in 2016 and hope to continue our effort at being leaders in the field of corrections.

George A. Lombardi
Director

A Safer Missouri and the Standard of Excellence in Corrections

Office of the Director | 2015 Top Accomplishments | Adult Institutions | Human Services | Offender Rehabilitative Services
Probation and Parole | Statistics | Budget | Directory





Top 2015 Accomplishments

Officer Nathan Box receives Missouri Medal of Valor

CO I Nathan Box became the first corrections officer for the Missouri Department of Corrections to receive the Missouri Medal of Valor for his heroic actions in helping a co-worker who was being assaulted in May 2014 at the South Central Correctional Center in Licking. Gov. Jay Nixon presented Nathan with Missouri's highest public safety award, during a ceremony in December in the Governor's Office at the Capitol.

Nathan was recognized for his actions in 2014, when an offender attacked a fellow officer. Nathan subdued the offender and recovered the weapon used in the attack.

The Medal of Valor is awarded "to a public safety officer who has exhibited exceptional courage, extraordinary decisiveness and presence of mind, and unusual swiftness of action, regardless of his or her own personal safety, in the attempt to save or protect human life."



Release center transitions into minimum-security facility

As a way to effectively manage an increase in the prison population while utilizing existing facilities and resources, the department transitioned the community release center in Kansas City into a minimum-security correctional center. The 410-bed facility, which served high risk and need offenders on probation and parole supervision, began transitioning to a correctional center in 2015 that provides reentry services to low custody level inmates being released to supervision by the department. The existing facility received minor security upgrades throughout the summer, while probationers and parolees that were housed at the release center were transitioned into the community. The newly named Kansas City Reentry Center began receiving its first incarcerated offenders in September, meeting the conversion deadline that the department put in place when the plan was announced in February.

Riley, Bisel and Sharp earn Director's Award of Valor

Three DOC employees earned the Director's Award of Valor in 2015 by risking their own safety to intervene in separate assaults on fellow staff members by an offender at two different facilities.



CO I Dustin Sharp

CO I Carmen Riley and FUM Jani Bisel were recognized for stopping an assault on Case manager Jessica Clariday at the Western Missouri Correctional Center.

CO I Dustin Sharp received the award for stepping in to assist an officer who was being assaulted and prevented further harm by subduing and restraining the offender until help arrived.



Pictured are (from left): CO I Carmen Riley, Case Manager Jessica Clariday and FUM Janita Bisel.

A Safer Missouri and the Standard of Excellence in Corrections



P4P celebrates milestones, recognized for national award

The Puppies for Parole program achieved two adoption milestones in 2015 and was named a semifinalist in a national awards competition. The program, which helps find suitable homes for unadoptable dogs while teaching offenders about compassion and altruistic behavior, adopted its 3,000th and 3,500th dog in 2015. The program, which does not use any taxpayer money and operates on donations and volunteers, was also named a semifinalist in the prestigious Innovations in American Government Awards competition sponsored by the Ash Center for Democratic Governance and Innovation in the John F. Kennedy School of Government at Harvard University. Since the program's inception in 2010, it has expanded to 19 correctional centers in Missouri.



Top 2015 Accomplishments



Saint Louis University Prison Program graduates first class

A select number of staff and offenders from the Eastern Reception, Diagnostic and Correctional Center (ERDCC) were the first to receive their Associate of Arts Degree from Saint Louis University after graduating from the university's Prison Program, which is a collaborative effort between the department and the university that provides higher education to department staff and offenders. The Prison Program began in 2008 when faculty from the university began holding theological studies classes with incarcerated offenders at ERDCC. The program expanded in 2010 with the creation of the Associate of Arts degree program that included allowing staff members to earn their associate's degree. Twelve incarcerated offenders graduated in November, while seven staff members participated in the commencement ceremony in December.

2015 Employees of the Month



January 2015

David Topash, Corrections Supervisor I

February 2015

Amy Miller, Senior Office Support Assistant

March 2015

Teresa Smith, Supply Manager I

April 2015

Cynthia Collier, P & P Unit Supervisor

May 2015

Gary Hoelscher, Fire & Safety Coordinator

June 2015

Lora Estes, P & P Officer II

July 2015

Paula Reed, Assistant Warden

August 2015

Michelle McAfee, P & P Officer II

September 2015

Larry Koller, Tractor Trailer Driver

October 2015

Sonny Orbin, Corrections Officer II

November 2015

Rachel Ramsey, Academic Teacher III

December 2015

Michael Watts, Store Keeper II

A Safer Missouri and the Standard of Excellence in Corrections

Division of Adult Institutions

Dave Dormire, Director

The Division of Adult Institutions is responsible for the management of the state's 21 adult correctional institutions. The division operates safe, secure, and humane institutions for the confinement of individuals committed by the courts to serve a prison sentence. Incarcerated offenders engage in work, school or rehabilitative programs throughout their confinement in order to prepare them to be productive, law-abiding citizens upon their release.

Offenders provide assistance during December flooding

In late December 2015, several work-release offenders from ERDCC, FCC, MECC, PCC and NECC assisted in sandbagging efforts during the flooding that occurred in the St. Louis area. Under the supervision of custody staff, offenders were called to action to begin sandbagging. Work-release offenders from ERDCC, FCC, PCC and MECC put in long hours during the days and even into the early morning hours alongside citizen volunteers and National Guardsmen during the last week of 2015 at Kimmswick, Perryville, St. Genevieve, Arnold, High Ridge and in Perry County to shore up levees on the Mississippi, Meramec, and other rivers and streams in the area, which were expected to crest at record or near-record levels. While offenders from ERDCC, FCC, MECC and PCC were on-site filling sandbags to try to hold back the flood waters, offenders at NECC filled 1,200 sandbags at the correctional center.



Offenders assist with sandbagging efforts in December.

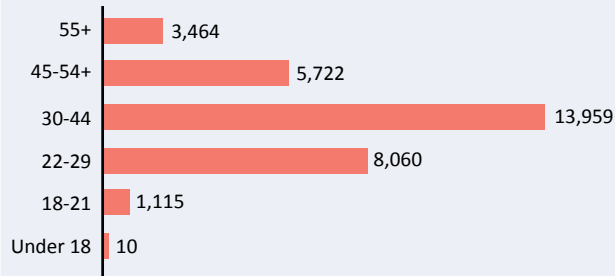
Prison Demographics

32,330 incarcerated offenders*

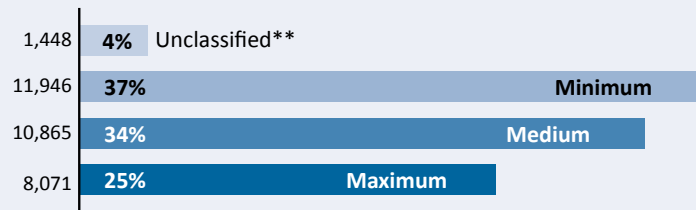
*as of Dec. 31, 2015

**Unclassified offenders are not yet assigned a custody level at the time of this snapshot.

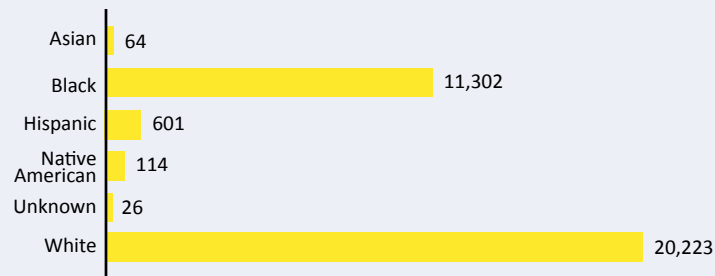
Age



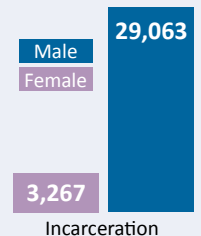
Population by custody level



Race



Gender



A Safer Missouri and the Standard of Excellence in Corrections

Office of the Director | 2015 Top Accomplishments | Adult Institutions | Human Services | Offender Rehabilitative Services
Probation and Parole | Statistics | Budget | Directory



Division of Human Services

Cari Collins, Director

The Division of Human Services provides support to the Office of the Director, Division of Adult Institutions, Division of Offender Rehabilitative Services and Division of Probation & Parole. The Division of Human Services is tasked with recruiting a diverse professional work force, maintaining that qualified work force, improving the work environment of employees, and the communication between management and staff.

Training Academy provides cutting edge learning environment

The Peer Action and Care Teams (PACT) training program developed by the department's Training Academy provides a cutting edge learning environment for its participants by offering three different modes of enhanced learning. PACT was created so department employees can receive support, assistance and referrals to resources in the aftermath of a trauma-related event at work or home. Participants interested in becoming PACT members first experience a self-paced learning module through the department's online Training Academy that addresses the procedural requirements and guidelines of being a PACT member. The self-paced module permits employees to remain at their work sites and take this module when it's convenient for them. The second phase of the PACT training consists of a Virtual Instructor Led Training that addresses Trauma Responsive Services for employees, an integral part of being a PACT member. Participants learn skills such as sensitivity to individual responses to traumatic experiences and appropriate coping techniques to minimize the harmful effects of some of those reactions. The final component of this training is two days of classroom participation where employees learn multiple skills in relation to being a peer responder, including how to locate and provide resources appropriate to the concerns of a co-worker, communication skills during times of extreme stress, and self-care techniques to avoid the harmful effects of vicarious trauma that a PACT member may experience. Since the inception of this multi-faceted program, 318 new PACT members have successfully completed the program and become PACT members. The new training requirements reduced the time out of the work site by a full day, saving costs in relation to travel, lodging and coverage at the work sites. This modality of the PACT program was also adopted by the Ohio Division of Youth Services to ensure the wellbeing of their employees.



Offenders make use of religious and spiritual programming

Religious and spiritual programming opportunities and pastoral care services are provided for incarcerated offenders in all adult correctional centers. In 2015, the average number of weekly visits to the chapel by incarcerated offenders stood at nearly 8,700. Department chaplains assigned at every adult institution work with volunteers from various faith groups to ensure that incarcerated offenders have the access to practice the religion of their choice within a secure setting. Last year, more than 1,170 chapel volunteers of the faith community helped assist in providing one-on-one spiritual counseling and religious services to incarcerated offenders. The impact of religious and spiritual services for incarcerated offenders has been shown to decrease conduct violations and promote institutional adjustment. Incarcerated offenders regularly attending religious and spiritual programming are more likely to engage in activities that promote positive attitudes and behaviors.



Chapel at the Fulton Reception and Diagnostic Center

A Safer Missouri and the Standard of Excellence in Corrections

Division of Offender Rehabilitative Services

Matt Sturm, Director

The Division of Offender Rehabilitative Services is responsible for the development of treatment and service programs for offenders. These programs include offender health care (medical and mental health), sex offender assessment and treatment, adult education and workforce readiness, library services, substance abuse services, and Missouri Vocational Enterprises.

Offenders receive hands on training with new commercial vehicle simulator



In March 2015, offenders had the opportunity to begin taking Commercial Vehicle Operator training classes at the Northeast Correctional Center (NECC) in Bowling Green. The goal of the class is to provide learning outcomes that will afford offender students the opportunity to work toward acquiring a commercial driver's license (CDL) and employment in the trucking industry upon their release from incarceration. The program utilizes a state of the art "simulator" similar to those currently being used by the trucking industry to train drivers.

Offenders in the class learn about completing a vehicle point checklist, pre-trip inspections, and the operation of a super-10 transmission. The simulator allows offenders taking the class to receive experience driving a commercial vehicle in diverse settings, such as interstate highways, light city traffic and rural roads. The simulator also allows offenders to experience driving a commercial vehicle in a variety of weather-related conditions. The curriculum of the class is sanctioned by the U.S. Department of Labor.

Offenders at Algoa show off their talent after learning new job skills

Offenders in the Culinary Arts classes at the Algoa Correctional Center got to show off their talent and what they learned at a graduation ceremony held at the correctional center in 2015. The graduates designed, prepared, decorated and displayed their gingerbread houses. Staff members and guests of the offenders that were present at the ceremony lined up to admire and comment on the creative effort by the Culinary Arts graduates, who were dressed in their cook uniforms at the event. This is one example of offenders incarcerated in the department taking advantage of the career and educational opportunities available to them.

In 2015, more than 1,617 incarcerated offenders obtained their high school equivalency certificates. The department also has a number of career and technical certification programs that provide offenders the opportunity to receive certification and licenses in food handling/management, cosmetology and nursing assistance, as well as programs where offenders can be certified by the Department of Labor, the National Center for Construction and Educational Research, and Certiport.



A Safer Missouri and the Standard of Excellence in Corrections

Office of the Director | 2015 Top Accomplishments | Adult Institutions | Human Services | Offender Rehabilitative Services
Probation and Parole | Statistics | Budget | Directory





Division of Probation & Parole

Ellis McSwain, Chairman

The Division of Probation and Parole supervises felony offenders ordered to probation by the courts or offenders released by the Parole Board from incarceration by means of parole or conditional release. Probation and Parole Officers within the division establish viable plans to address an offender's needs under supervision, ultimately reducing risk and improving success while on supervision. The division has more than 40 district offices, six community supervision centers and a community release center supervising offenders who are on probation, parole or conditional release. The division also operates a Command Center, which is a 24-hour a day communication center that tracks offenders in the community on electronic monitoring.

Governor appoints three to Parole Board

Ellis McSwain, Gary Dusenberg and Jennifer Zamkus were appointed to the Parole Board by Gov. Jay Nixon in 2015. The seven-member Board of Probation and Parole is responsible for determining whether a person confined in the Missouri Department of Corrections shall be paroled or conditionally released. The governor appointed them for terms ending in November 2021.

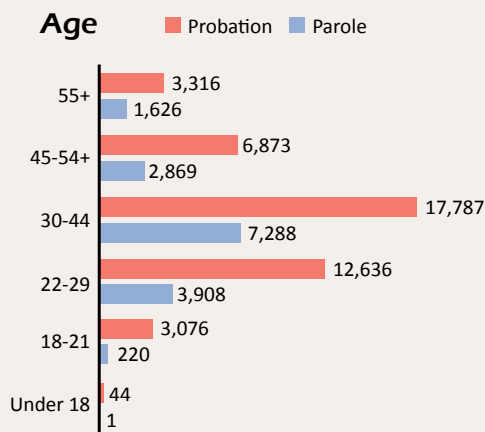


P&P Demographics

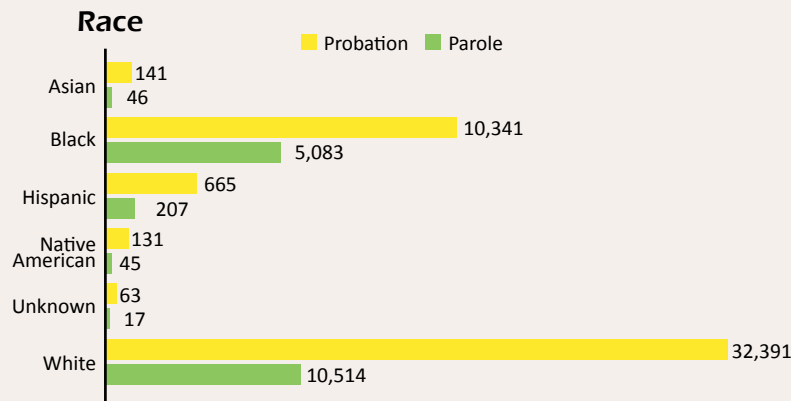
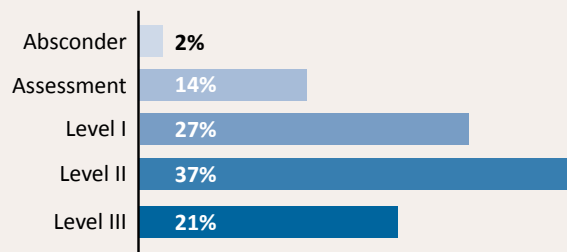
59,644 offenders*

*as of Dec. 31, 2015

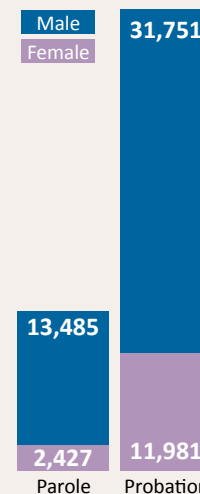
**Level III is the most intensive of supervision and Level I is the least intensive. Assessment is the first 90 days of supervision. An absconder is an offender who has not reported for up to 90 days.



Field population by supervision level**



Gender



A Safer Missouri and the Standard of Excellence in Corrections

Office of the Director | 2015 Top Accomplishments | Adult Institutions | Human Services | Offender Rehabilitative Services
 Probation and Parole | Statistics | Budget | Directory

Most Serious Offense**PERSON**

includes murder, rape, robbery, assault, child molestation, elder abuse, arson 1

Prison**16,605****Probation*****6,941****Parole*†****4,535****PROPERTY**

includes burglary, stealing, forgery, arson 2

7,022**13,229****5,070****DRUGS**

includes possession, sales, manufacture, trafficking

6,037**14,607****4,644****DWI****1,117****3,713****622****OTHER**

includes weapons, public order offenses and criminal nonsupport

1,549**5,242****1,041****TOTAL****32,330****43,732****15,912**

on all offenders as of Dec. 31, 2015 • * includes interstate *includes community release and supervision centers

TOP 5 crimes of incarcerated offenders

Offense	Charge Code	Count	Avg. Yrs. Sentence*
distribution/delivery/manufacture of a controlled substance	32465	2,594	9.3
possession of a controlled substance	32450	2,489	5.5
first-degree robbery	12010	2,410	16.3
second-degree burglary	14020	2,041	6.2
second-degree murder	10031	1,996	24.8

*Life sentences calculated at 30 years and sentences over 45 years calculated at 45.

TOP 5 crimes of P&P offenders

Offense	Charge Code	Count	Avg. Probation*
possession of a controlled substance	32450	11,898	4.6
theft—\$500/more-less \$25,000	15021	4,585	4.8
distribution/delivery/manufacture of a controlled substance	32465	4,214	4.9
second-degree burglary	14020	4,185	4.7
dwi/alcohol	47410	2,565	4.7

*Term length in years applies to offenders serving a probation sentence.

Inspector General

The Office of the Inspector General is charged with objectively examining department operations. This is accomplished through the Investigations Unit and the Intelligence Unit. The Office of Inspector General is the investigative arm of the department and conducts investigations in response to reports of suspected violation of statute and department policy and procedure.

Criminal cases**submitted for prosecution***

	Cases submitted	Charges filed	Cases declined	Still pending review
2014	740	261	297	182
2015	634	164	154	316

*Data as of Dec. 31, 2015

A Safer Missouri and the Standard of Excellence in Corrections

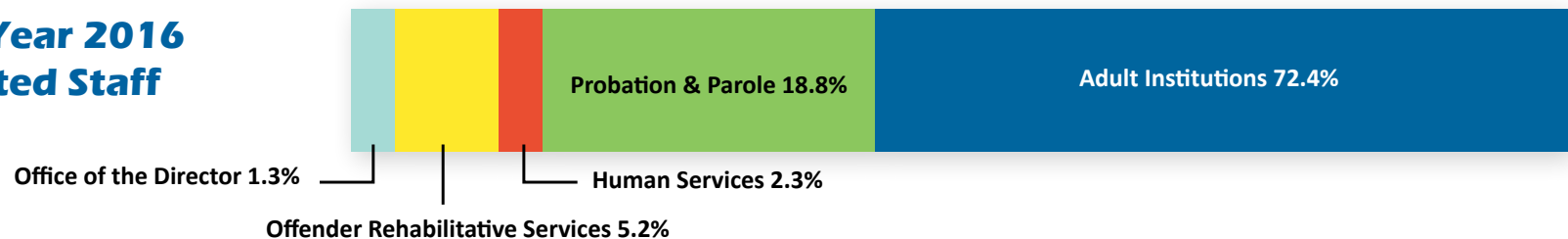
Office of the Director | 2015 Top Accomplishments | Adult Institutions | Human Services | Offender Rehabilitative Services
Probation and Parole | Statistics | Budget | Directory



Total Budget by Division*

Office/Division	fy2016	fy2011	fy2006
Adult Institutions	\$291,705,122	\$253,170,320	\$227,556,122
Offender Rehabilitative Services	\$194,260,116	\$194,133,726	\$147,288,948
Human Services	\$116,270,451	\$99,694,847	\$95,768,467
Probation & Parole	\$93,815,442	\$94,351,007	\$75,540,104
Office of the Director	\$14,117,197	\$18,684,312	\$33,663,115
Totals	\$710,168,328	\$660,034,212	\$579,816,756

*This reflects the monies allocated within the DOC budget and does not reflect related costs (such as fringe benefits) that are in other state agency budgets.

Fiscal Year 2016
Budgeted Staff

Average Per Diem Costs

Prison	Probation & Parole*	Residential Facility**	Electronic Monitoring
Total Per Diem*	General Community Supervision	plus general supervision cost	plus general supervision cost
\$57.76	five general community supervision levels		
Direct Cost [†]			
\$16.81	\$6.04	\$83.00	\$12.75

*includes direct cost, fringe benefits and costs in other agency budgets

**residential facilities include community release and supervision centers

[†]includes an offender's health care, wage, discharge costs, food costs, and operational expense and equipment

A Safer Missouri and the Standard of Excellence in Corrections

Office of the Director | 2015 Top Accomplishments | Adult Institutions | Human Services | Offender Rehabilitative Services
Probation and Parole | Statistics | Budget | Directory



DIVISION of ADULT INSTITUTIONS

Division Director
Dave Dormire573-526-6524
2729 Plaza Drive, Jefferson City 65102

Algoa Correctl Ctr573-751-3911
8501 No More Victims Rd, Jefferson City 65101
Boonville Correctl Ctr660-882-6521
1216 E Morgan St, Boonville 65233
Chillicothe Correctl Ctr660-646-4032
3151 Litton Road, Chillicothe 64601
Crossroads Correctl Ctr816-632-2727
1115 E Pence, Cameron 64429
Eastern Reception,
Diagnostic & Correctl Ctr573-358-5516
2727 Hwy K, Bonne Terre 63628
Farmington Correctl Ctr573-218-7100
1012 W Columbia, Farmington 63640
Fulton Reception & Diagnostic Ctr573-592-4040
PO Box 190, 1393 Hwy O, Fulton 65251
Jefferson City Correctl Ctr573-751-3224
8200 No More Victims Rd, Jefferson Cy 65101
Kansas City Reentry Center816-842-7467
651 Mulberry St 64101
Maryville Treatmnt Ctr660-582-6542
30227 US Hwy 136, Maryville 64468
MO Eastern Correctl Ctr636-257-3322
18701 Old Hwy 66, Pacific 63069
Moberly Correctl Ctr660-263-3778
PO Box 7, 5201 S. Morley, Moberly 65270
Northeast Correctl Ctr573-324-9975
13698 Airport Road, Bowling Green 63334
Ozark Correctl Ctr417-767-4491
929 Honor Camp Ln, Fordland 65652
Potosi Correctl Ctr573-438-6000
11593 State Hwy O, Mineral Point 63660
South Central Correctl Ctr573-674-4470
255 Hwy 32 West, Licking 65542
Southeast Correctl Ctr573-683-4409
300 East Pedro Simmons Dr, Charleston 63834
Tipton Correctl Ctr660-433-2031
619 N Osage Ave, Tipton, MO 65081
Western MO Correctl Ctr816-632-1390
609 East Pence Rd, Cameron, MO 64429
Western Reception, Diagnostic & Correctl Ctr
816-387-2158
3401 Faraon, St. Joseph 64506
Women's Eastern Reception, Diagnostic & Correctl Ctr
573-594-6686
1101 E Hwy 54, Vandalia 63382

DOC CENTRAL OFFICE Switchboard & General Information

2729 Plaza Drive, Jefferson City, MO 65109 • 573-751-2389

DIVISION of PROBATION & PAROLE

Central Office Switchboard & General Information 573-751-8488
3400 Knipp Drive • Jefferson City, MO 65109

Division Director Ellis McSwain 573-526-6551

Regional, District & Satellite Probation & Parole Offices

Dist 1—St. Joseph 816-271-3131
3305 Faraon St 64506
Satellite •—Maryville 660-582-4799
115 E. 4th St 64468
Dist 2—Cameron 816-632-3781
207 E. McElwain, Suite B 64429
Dist 3—Hannibal 573-248-2450
2002 Warren Barret Dr. 63401
Dist 4—KC 816-482-5882
1730 Prospect • 2nd Floor 64127
Dist 4B—KC 816-889-7420
615 E. 13th St., Ste. G7 64106
Dist 4C—KC Central 816-889-3322
8800 Blue Ridge Blvd., Ste. 300A 64138
Dist 4W—KC West 816-753-8320
1330 Brush Creek 64110
Western Regional—KC 816-889-7600
Fletcher Daniels Building
615 E. 13th St., Ste. 110 64106
Dist 5—Warrensburg 660-543-7920
505 N. Ridgeview Dr • Ste D 64093
Dist 6—Columbia 573-441-5862
1500 Vandiver • Ste 110 65202
Dist 7B—St. L Probation 314-340-6999
1114 Market • Room 200 63101
Dist 7C—St. L Central 314-340-7240
111 N. 7th • Room 150 63101
Dist 7S—St. L South 314-256-4888
3101 Chouteau 63103
Dist EC—St. L 314-877-1000
220 South Jefferson 63103
Dist EP—St. L 314-877-1000
220 South Jefferson 63103
ERA—Eastern Reg Annex 314-877-1176
220 South Jefferson • 2nd Floor 63103
Dist 8C—St. L Co 314-340-3801
9441 Dielman Rock Isl Industrial Dr 63132
Dist 8E—St. L Co 314-475-7977
4040 Seven Hills Rd 63033
Dist 8N—St. L Co N. 314-877-2602
8501 Lucas & Hunt Blvd 63163
Dist 8S—St. L Co S. 314-416-2884
7545 S. Lindbergh • Ste 120 63125
Dist 9—Joplin 417-629-3200
1919 Rangeline Road 64801
Dist 10—Springfield 417-888-4203
2530 S. Campbell • Ste H 65807
Dist 10R—Spqfld 417-895-5700
1735 W. Catalpa • Ste A 65807
Dist 11—Rolla 573-368-2233
1105 Kingshighway 65401
Satellite • Steelville 573-775-3311
101 S. 1st St. 65565
Dist 12—Farmington 573-218-5006
1430 Doubet Rd 63640
Dist 13—West Plains 417-256-6178
1580 Imperial Center 65775
Dist 14—Sikeston 573-472-5353
102 Arthur Street 63801
Satellite • New Madrid 573-748-2464
350-C US Highway 61 63869
Dist 15—Hillsboro 636-789-3392
4621 Yeager Road 63050
Dist 16—Union 636-583-8933
3 Truman Court 63084
Dist 17—St. Charles 636-940-3333
211 Compass Point Drive 63301
Dist 18—Moberly 660-263-3762
1150 S. Morley 65270
Satellite • Macon 660-385-5731
1718 Prospect Dr • Ste A 63352
Satellite • Kirksville 660-785-2430
516 South Main 63501
Dist 19—Liberty 816-792-0793
910 Kent, Liberty 64068
Dist 20—Camdenton 573-346-2878
409 W US Highway 54 65020
Dist 21—Branson 417-334-5613
2720 Shepherd of Hills Exp • Ste A 65616
Dist 22—Cape Girardeau 573-290-5820
3463 Armstrong 63703
Satellite • Perryville 573-547-9285
12 East Wichern 63775
Dist 23—Kennett 573-888-4900
1401 Laura Dr. 63857
Dist 24—Independence 816-795-6055
14440 East 42nd St 64055
Dist 25—Poplar Bluff 573-840-9555
1441 Black River Ind. Park Dr. 63901

DIVISION of OFFENDER REHABILITATIVE SERVICES

Division Director
Matt Sturm 573-526-6493
2729 Plaza Drive, Jefferson City 65102

Cremer Therapeutic
Treatment Center573-592-4013
689 Highway O, Fulton 65251

Dist 26—Fulton 573-592-4061
1397 Highway O 65251
Dist 27—Jefferson City 573-751-4949
2705 W. Main 65109
Dist 28—Belton 816-322-1166
836 North Scott 64012
Dist 29—Sedalia 660-530-5530
205 Thompson Road 65301
Dist 30—Nevada 417-448-1250
330 South Prewitt 64772
Dist 31—Caruthersville 573-333-2809
PO Box 940, 911 Hwy 84 W 63830
Dist 32—Lexington 660-259-3465
1102 Main St 64067
Satellite • Marshall 660-831-5238
1239 Santa Fe Trail • Ste 300 65340
Dist 33—Neosho 417-451-5322
1845 Laquesta Drive 64850
Dist 34—Lake Ozark 573-964-6748
101 Crossings West, Suite 103 65049
Dist 35—Lebanon 417-532-6224
300 South Jackson 65536
Dist 36—Potosi 573-438-3448
23 Southtowne Dr. 63664
Dist 37—Dexter 573-624-9434
1003 Wildwood • Ste A 63841
Dist 38—Troy 636-528-5821
311 Travis Boulevard 63379
Dist 39—Trenton 660-359-3227
1601 East 30th 64683
Satellite • Brookfield 660-258-7916
301 Burnham 64628
Dist 41—Charleston 573-683-3673
305 South Cooper 63834
Dist 42—Nixa 417-724-1344
301 E. CC Highway • Ste 4 65714
Dist 43—Aurora 417-678-0832
27 W. Locust 65605

St. Louis Community Release
Center 314-877-0300
1621 North First St 63102





Missouri Department of Corrections



For more information about the Missouri Department of Corrections, please visit doc.mo.gov.
If you're interested in our Puppies for Parole program, you can visit our facebook page at www.facebook.com/MissouriPuppiesforParole.