

MISSOURI DEPARTMENT OF CORRECTIONS



A Profile of the Institutional Population on June 30, 2004

February 23, 2005

Contents

1. Institutional Population on December 31, 2004	
Demographics	3
Offender Classification	4
Sentencing Analysis	
Top Twenty Sentencing Counties	6
Offense Groups	6
Top Twenty Offenses:	
All Offenders	7
By Gender	8
By Race	10
2. Comparison with the Institutional Population of December 31, 1999	
Offense Groups by Gender	12
Average Sentences by Gender	12
Violent / Nonviolent Composition by Gender	12
Racial Composition by Gender	13
3. Prison Admissions from 1995 to 2004	
Type of Admission	14
Female Admissions	15
4. Prison Releases from 1995 to 2004	
Type of Release	16
Female Releases	17
5. Time Served by First Releases	
Offense group and Felony Class	18
Top Twenty offenses	26

The Demographics of the Offender Population on December 31, 2004

Race

RACE	Count			Percent		
	Female	Male	Total	Female	Male	Total
Asian	6	51	57	0.2%	0.2%	0.2%
Black	741	11,779	12,520	29.8%	41.8%	40.8%
Native American	15	125	140	0.6%	0.4%	0.5%
White	1,725	16,198	17,923	69.3%	57.5%	58.4%
Not Known	1	25	26	0.0%	0.1%	0.1%
TOTAL	2,488	28,178	30,666	100.0%	100.0%	100.0%

Current Age

	Count			Percent		
	Female	Male	Total	Female	Male	Total
AGE 16	-	3	3	0.0%	0.0%	0.0%
AGE 17	1	28	29	0.0%	0.1%	0.1%
AGE 18 TO 19	22	517	539	0.9%	1.8%	1.8%
AGE 20 TO 24	302	4,387	4,689	12.1%	15.6%	15.3%
AGE 25 TO 29	389	4,879	5,268	15.6%	17.3%	17.2%
AGE 30 TO 34	458	4,330	4,788	18.4%	15.4%	15.6%
AGE 35 TO 39	433	3,897	4,330	17.4%	13.8%	14.1%
AGE 40 TO 44	471	4,282	4,753	18.9%	15.2%	15.5%
AGE 45 TO 49	252	2,946	3,198	10.1%	10.5%	10.4%
AGE 50 TO 54	97	1,556	1,653	3.9%	5.5%	5.4%
AGE 55 TO 59	36	741	777	1.4%	2.6%	2.5%
AGE 60 TO 64	18	337	355	0.7%	1.2%	1.2%
AGE 65 TO 69	5	155	160	0.2%	0.6%	0.5%
AGE 70 AND OVER	4	120	124	0.2%	0.4%	0.4%
TOTAL	2,488	28,178	30,666	100.0%	100.0%	100.0%

Age on Commitment

	Count			Percent		
	Female	Male	Total	Female	Male	Total
AGE 12 OR LESS	-	1	1	0.0%	0.0%	0.0%
AGE 13 TO 15	2	23	25	0.1%	0.1%	0.1%
AGE 16	4	132	136	0.2%	0.5%	0.4%
AGE 17	17	644	661	0.7%	2.3%	2.2%
AGE 18 TO 19	100	3,336	3,437	4.0%	11.8%	11.2%
AGE 20 TO 24	447	6,602	7,049	18.0%	23.4%	23.0%
AGE 25 TO 29	456	4,618	5,074	18.3%	16.4%	16.5%
AGE 30 TO 34	462	4,023	4,485	18.6%	14.3%	14.6%
AGE 35 TO 39	424	3,481	3,905	17.0%	12.4%	12.7%
AGE 40 TO 44	339	2,688	3,027	13.6%	9.5%	9.9%
AGE 45 TO 49	146	1,416	1,562	5.9%	5.0%	5.1%
AGE 50 TO 54	65	661	726	2.6%	2.3%	2.4%
AGE 55 TO 59	15	306	321	0.6%	1.1%	1.0%
AGE 60 TO 64	6	120	126	0.2%	0.4%	0.4%
AGE 65 TO 69	5	71	76	0.2%	0.3%	0.2%
AGE 70 and over	-	55	55	0.0%	0.2%	0.2%
TOTAL	2,488	28,178	30,666	100.0%	100.0%	100.0%

Offender Classification, Institutional Population, December 31, 2004

Note 'Unclassified' includes recently admitted offenders who have not completed the classification process and offenders sentenced to a 120 day program. 120 day offenders do not receive a full classification upon admission because of the expected short prison stay.

Current Educational Attainment

	Count			Percent		
	Female	Male	Total	Female	Male	Total
HSD/GED	1,420	16,800	18,220	57.1%	59.6%	59.4%
9-12th Grade	155	2,656	2,811	6.2%	9.4%	9.2%
6-8th Grade	159	2,475	2,634	6.4%	8.8%	8.6%
3-5th Grade	129	1,483	1,612	5.2%	5.3%	5.3%
0-2nd Grade	501	3,267	3,768	20.1%	11.6%	12.3%
Unclassified	124	1,496	1,621	5.0%	5.3%	5.3%
TOTAL	2,488	28,178	30,666	100.0%	100.0%	100.0%

Current Vocational Readiness

	Count			Percent		
	Female	Male	Total	Female	Male	Total
Trained & Skilled	317	3,503	3,820	12.7%	12.4%	12.5%
Skilled	514	7,510	8,024	20.7%	26.7%	26.2%
Semi-skilled	674	8,589	9,263	27.1%	30.5%	30.2%
Unskilled	491	3,745	4,236	19.7%	13.3%	13.8%
No skills or training	368	3,334	3,702	14.8%	11.8%	12.1%
Unclassified	124	1,496	1,621	5.0%	5.3%	5.3%
Total	2,488	28,178	30,666	100.0%	100.0%	100.0%

Medical Health

	Count			Percent		
	Female	Male	Total	Female	Male	Total
No medical problems	942	17,813	18,755	37.9%	63.2%	61.2%
Routine Sick Call	1,209	7,086	8,295	48.6%	25.1%	27.0%
Daily Nursing	83	1,179	1,262	3.3%	4.2%	4.1%
24 hour Nursing	130	556	686	5.2%	2.0%	2.2%
Residential Unit	-	47	47	0.0%	0.2%	0.2%
Unclassified	124	1,496	1,621	5.0%	5.3%	5.3%
TOTAL	2,488	28,178	30,666	100.0%	100.0%	100.0%

Mental Health

	Count			Percent		
	Female	Male	Total	Female	Male	Total
Emotionally Stable	909	11,203	12,112	36.5%	39.8%	39.5%
Minimal Impairment	651	11,791	12,442	26.2%	41.8%	40.6%
Mild/Clinic Care	778	3,412	4,190	31.3%	12.1%	13.7%
Clinic care/Medication	26	237	263	1.0%	0.8%	0.9%
Residential Unit	-	38	38	0.0%	0.1%	0.1%
Unclassified	124	1,496	1,621	5.0%	5.3%	5.3%
TOTAL	2,488	28,178	30,666	100.0%	100.0%	100.0%

Custody Level

	Count			Percent		
	Female	Male	Total	Female	Male	Total
C-1	351	3,324	3,675	14.1%	11.8%	12.0%
C-2	791	6,024	6,815	31.8%	21.4%	22.2%
C-3	583	3,788	4,371	23.4%	13.4%	14.3%
C-4	224	4,561	4,785	9.0%	16.2%	15.6%
C-5	415	8,984	9,399	16.7%	31.9%	30.6%
Unclassified	124	1,496	1,621	5.0%	5.3%	5.3%
TOTAL	2,488	28,178	30,666	100.0%	100.0%	100.0%

The custody level is determined by the length of sentence and institutional behavior. Offenders with more than eight years to serve or convicted of a dangerous felony and with more than five years to serve are C-5 (maximum security). Offenders with less than 12 months to serve and with good institutional behavior are C-1. Sex offenders who are required to complete the Missouri Sex Offender Program have a custody override of C-4.

Substance Abuse Assessment and Treatment Need

Assessment	Females		Males		Total	
	Count	Percent	Count	Percent	Count	Percent
No SA Test	291	NA	6,807	NA	7,098	NA
No Abuse	275	13%	2,344	11%	2,619	11%
Mild: requires SA Education	280	13%	2,855	13%	3,135	13%
Moderate: 30/60 days treatment	679	31%	6,995	33%	7,674	33%
Intensive 120 day treatment	845	38%	7,726	36%	8,571	36%
Severe: 6-12 mth treatment	118	5%	1,450	7%	1,568	7%
Total	2,488	100%	28,178	100%	30,666	100%

The substance abuse assessment and classification was introduced by the Department in 2003 and not all incarcerated offenders have been assessed to date. Most assessments are completed on admission to prison and on the start of field supervision (probation and parole).

Sentencing, Institutional Population on December 31, 2004

Top Twenty Sentencing Counties

Rank		Females		Males		Total		Percent of Total
		Count	Ave. Sent (yrs)	Count	Ave. Sent (yrs)	Count	Ave. Sent (yrs)	
1	ST. LOUIS CITY	226	11.7	4,480	17.2	4,706	16.9	15.3%
2	JACKSON	257	8.5	3,819	15.1	4,076	14.7	13.3%
3	ST. LOUIS CNTY	264	8.4	3,363	14.0	3,627	13.6	11.8%
4	GREENE	95	8.1	1,145	11.0	1,240	10.8	4.0%
5	ST. CHARLES	88	8.5	977	12.5	1,065	12.2	3.5%
6	BOONE	104	6.7	800	11.3	904	10.8	2.9%
7	CLAY	69	7.3	696	12.4	765	11.9	2.5%
8	BUCHANAN	67	6.4	629	10.4	696	10.0	2.3%
9	JASPER	56	7.0	454	11.0	510	10.6	1.7%
10	JEFFERSON	43	8.1	466	12.1	509	11.7	1.7%
11	ST. FRANCOIS	62	8.1	388	11.6	450	11.1	1.5%
12	CAPE GIRARDEAU	45	7.1	351	11.2	396	10.7	1.3%
13	FRANKLIN	40	6.5	345	8.6	385	8.4	1.3%
14	COLE	32	5.8	306	12.9	338	12.2	1.1%
15	LAFAYETTE	35	8.3	293	9.6	328	9.5	1.1%
16	PETTIS	30	8.0	278	9.6	308	9.5	1.0%
17	DUNKLIN	38	7.0	265	9.5	303	9.2	1.0%
18	PEMISCOT	30	6.3	262	11.3	292	10.8	1.0%
19	SCOTT	21	4.8	263	10.5	284	10.0	0.9%
20	CASS	24	7.8	253	9.4	277	9.2	0.9%
	Top Twenty Counties	1,626	8.3	19,833	13.8	21,459	13.3	70.0%
	Rest of State	862	8.1	8,345	10.4	9,207	10.2	30.0%
	Total	2,488	8.2	28,178	12.8	30,666	12.4	100.0%

Offense Group

	Female		Male		Total	
	Count	Percent	Count	Percent	Count	Percent
1.VIOLENT	592	23.8%	9,773	34.7%	10,365	33.8%
2.SEX	101	4.1%	4,045	14.4%	4,146	13.5%
3.NONVIOLENT	930	37.4%	7,558	26.8%	8,489	27.7%
4.DRUGS	802	32.2%	5,838	20.7%	6,640	21.7%
5.DWI	63	2.5%	963	3.4%	1,026	3.3%
TOTAL	2,488	100.0%	28,178	100.0%	30,666	100.0%

Average Sentences By Offense Group

	Females	Males	Total
1.VIOLENT	15.1	18.7	18.5
2.SEX	9.7	16.8	16.6
3.NONVIOLENT	5.5	6.7	6.6
4.DRUGS	6.3	8.4	8.1
5.DWI	4.1	4.5	4.5
TOTAL	8.2	12.8	12.4

Top Twenty Offenses: All Offenders

Rank	Missouri Charge Code	Offense	Count	Average Sentence (yrs)	Percent of Total
1	32465	DIST DEL MANUF CONTR SUB	2,759	9.0	9.0%
2	12010	ROBBERY 1ST DEGREE	2,465	18.8	8.0%
3	32450	POSS CONTROLLED SUBSTANC	2,260	5.5	7.4%
4	14020	BURGLARY 2ND DEG	2,004	7.2	6.5%
5	10031	MURDER 2ND DEGREE	1,749	25.7	5.7%
6	12020	ROBBERY 2ND DEGREE	1,203	10.7	3.9%
7	47410	DWI/ALCOHOL	1,014	4.5	3.3%
8	18010	FORGERY	971	5.7	3.2%
9	15010	STEALING	950	7.2	3.1%
10	10021	MURDER 1ST DEGREE	869	29.6	2.8%
11	13031	ASSAULT 2ND DEGREE	851	6.9	2.8%
12	14010	BURGLARY 1ST DEG	721	10.9	2.4%
13	13011	ASLT 1ST-SER PHY INJURY	653	20.9	2.1%
14	23015	TAMP 1ST W MTRVEH-AIRPLN	642	5.2	2.1%
15	11076	STATUTORY SODOMY-1ST DEG	637	16.9	2.1%
16	32500	TRAFFIC IN DRUG 2ND DEG	469	9.0	1.5%
17	13020	ASSAULT 1ST DEG	446	12.5	1.5%
18	11021	STATUTORY RAPE-1ST DEGRE	382	15.5	1.2%
19	11010	FORC RAPE W WPN OR INJRY	363	27.7	1.2%
20	15021	THEFT-\$500/MORE-LESS \$25	351	5.3	1.1%
Top Twenty			21,759		71.0%
Rest			8,907		29.0%
Total			30,666		100.0%

Top Twenty Offenses for Female Offenders

Rank	Missouri Charge Code	Offense	Count	Average Sentence (yrs)	Percent of Total
1	32450	POSS CONTROLLED SUBSTANC	381	4.7	15.3%
2	18010	FORGERY	309	5.6	12.4%
3	32465	DIST DEL MANUF CONTR SUB	301	7.7	12.1%
4	15010	STEALING	151	6.8	6.1%
5	10031	MURDER 2ND DEGREE	139	23.6	5.6%
6	15021	THEFT-\$500/MORE-LESS \$25	78	5.1	3.1%
7	12020	ROBBERY 2ND DEGREE	75	10.0	3.0%
8	12010	ROBBERY 1ST DEGREE	64	13.1	2.6%
9	13031	ASSAULT 2ND DEGREE	64	5.4	2.6%
10	14020	BURGLARY 2ND DEG	64	5.9	2.6%
11	47410	DWI/ALCOHOL	62	4.1	2.5%
12	19010	PASSING A BAD CHECK	45	3.9	1.8%
13	13011	ASLT 1ST-SER PHY INJURY	44	15.5	1.8%
14	15034	STEALING 3RD OFFENSE	42	6.5	1.7%
15	10021	MURDER 1ST DEGREE	41	26.4	1.6%
16	23015	TAMP 1ST W MTRVEH-AIRPLN	37	3.8	1.5%
17	10041	VOLUNTARY MANSLAUGHTER	29	12.9	1.2%
18	26052	ENDANGER WELFARE CHILD	29	5.4	1.2%
19	13020	ASSAULT 1ST DEG	27	10.8	1.1%
20	14010	BURGLARY 1ST DEG	24	7.8	1.0%
Top Twenty			2006		80.6%
Rest			482		19.4%
Total			2,488		100.0%

Top Twenty Offenses for Male Offenders

Rank	Missouri Charge Code	Offense	Count	Average Sentence (yrs)	Percent of Total
1	32465	DIST DEL MANUF CONTR SUB	2458	9.1	8.7%
2	12010	ROBBERY 1ST DEGREE	2401	19.0	8.5%
3	14020	BURGLARY 2ND DEG	1940	7.3	6.9%
4	32450	POSS CONTROLLED SUBSTANC	1879	5.7	6.7%
5	10031	MURDER 2ND DEGREE	1610	25.9	5.7%
6	12020	ROBBERY 2ND DEGREE	1128	10.8	4.0%
7	47410	DWI/ALCOHOL	952	4.5	3.4%
8	10021	MURDER 1ST DEGREE	828	29.7	2.9%
9	15010	STEALING	799	7.3	2.8%
10	13031	ASSAULT 2ND DEGREE	787	7.0	2.8%
11	14010	BURGLARY 1ST DEG	697	11.0	2.5%
12	18010	FORGERY	662	5.8	2.3%
13	11076	STATUTORY SODOMY-1ST DEG	630	16.9	2.2%
14	13011	ASLT 1ST-SER PHY INJURY	609	21.2	2.2%
15	23015	TAMP 1ST W MTRVEH-AIRPLN	605	5.3	2.1%
16	32500	TRAFFIC IN DRUG 2ND DEG	451	9.0	1.6%
17	13020	ASSAULT 1ST DEG	419	12.6	1.5%
18	11021	STATUTORY RAPE-1ST DEGRE	373	15.5	1.3%
19	11010	FORC RAPE W WPN OR INJRY	363	27.7	1.3%
20	26031	NONSUP-6MO-12MO-AMT-\$500	333	4.1	1.2%
Top Twenty			19,924		70.7%
Rest			8,254		29.3%
Total Males			28,178		100.0%

Top Twenty Offenses for Black Offenders

Rank	Missouri Charge Code	Offense	Count	Average Sentence (yrs)	Percent of Total
1	12010	ROBBERY 1ST DEGREE	1,777	18.6	14.2%
2	32465	DIST DEL MANUF CONTR SUB	1,144	9.0	9.1%
3	10031	MURDER 2ND DEGREE	1,029	25.4	8.2%
4	12020	ROBBERY 2ND DEGREE	758	11.0	6.1%
5	32450	POSS CONTROLLED SUBSTANC	752	5.8	6.0%
6	14020	BURGLARY 2ND DEG	525	8.1	4.2%
7	10021	MURDER 1ST DEGREE	470	29.9	3.8%
8	32500	TRAFFIC IN DRUG 2ND DEG	420	9.0	3.4%
9	13011	ASLT 1ST-SER PHY INJURY	365	20.6	2.9%
10	14010	BURGLARY 1ST DEG	347	11.3	2.8%
11	15010	STEALING	311	7.9	2.5%
12	18010	FORGERY	256	5.9	2.0%
13	32495	TRAFFIC IN DRUG 2ND DEG	245	12.6	2.0%
14	13031	ASSAULT 2ND DEGREE	243	7.1	1.9%
15	13020	ASSAULT 1ST DEG	228	13.2	1.8%
16	23015	TAMP 1ST W MTRVEH-AIRPLN	211	5.3	1.7%
17	11010	FORC RAPE W WPN OR INJRY	194	28.2	1.5%
18	31010	ARMED CRIMINAL ACTION	182	20.1	1.5%
19	15034	STEALING 3RD OFFENSE	139	7.6	1.1%
20	11021	STATUTORY RAPE-1ST DEGRE	136	15.9	1.1%
Top Twenty			9,732		77.7%
Rest			2,788		22.3%
Total			12,520		100.0%

Top Twenty Offenses for White Offenders

Rank	Missouri Charge Code	Offense	Count	Average Sentence (yrs)	Percent of Total
1	32465	DIST DEL MANUF CONTR SUB	1,605	8.9	9.0%
2	32450	POSS CONTROLLED SUBSTANC	1,498	5.4	8.4%
3	14020	BURGLARY 2ND DEG	1,464	6.9	8.2%
4	47410	DWI/ALCOHOL	927	4.4	5.2%
5	18010	FORGERY	712	5.6	4.0%
6	10031	MURDER 2ND DEGREE	707	26.2	3.9%
7	12010	ROBBERY 1ST DEGREE	681	19.3	3.8%
8	15010	STEALING	629	7.0	3.5%
9	13031	ASSAULT 2ND DEGREE	599	6.7	3.3%
10	11076	STATUTORY SODOMY-1ST DEG	548	17.2	3.1%
11	12020	ROBBERY 2ND DEGREE	436	10.2	2.4%
12	23015	TAMP 1ST W MTRVEH-AIRPLN	423	5.1	2.4%
13	10021	MURDER 1ST DEGREE	392	29.3	2.2%
14	14010	BURGLARY 1ST DEG	368	10.5	2.1%
15	13011	ASLT 1ST-SER PHY INJURY	277	21.0	1.5%
16	26031	NONSUP-6MO-12MO-AMT-\$500	275	4.1	1.5%
17	11022	STATUTORY RAPE-2ND DEGRE	250	7.1	1.4%
18	11021	STATUTORY RAPE-1ST DEGRE	239	15.3	1.3%
19	15021	THEFT-\$500/MORE-LESS \$25	234	5.1	1.3%
20	11077	STATUTORY SODOMY-2ND DEG	221	8.1	1.2%
Top Twenty			12,485		69.7%
Rest			5,438		30.3%
Total			17,923		100.0%

Comparison with the Institutional Population on December 31, 1999

Increase of the Institutional Population By Offense Group 1999 to 2004

Offense Group	Females			Males			Total		
	1999	2004	% Chg.	1999	2004	% Chg.	1999	2004	% Chg.
1.VIOLENT	440	592	35%	9,139	9,773	7%	9,579	10,365	8%
2.SEX	77	101	31%	3,095	4,045	31%	3,172	4,146	31%
3.NONVIOLENT	852	930	9%	6,921	7,558	9%	7,774	8,489	9%
4.DRUGS	569	802	41%	4,152	5,838	41%	4,721	6,640	41%
5.DWI	54	63	17%	964	963	0%	1,018	1,026	1%
TOTAL	1,992	2,488	25%	24,271	28,178	16%	26,264	30,666	17%

The female population has increased by 25% over the last five years and the male population has increased by 17%. The drug population has increased the most since 1999, for both females and males (41%).

Changes in the Average Sentences (years) of the Institutional Population By Offense Group 1999 to 2004

Offense Group	Females			Males			Total		
	1999	2004	% Chg.	1999	2004	% Chg.	1999	2004	% Chg.
1.VIOLENT	15.9	15.1	-5%	19.3	18.6	-4%	19.1	18.4	-4%
2.SEX	8.2	9.7	19%	16.5	16.8	2%	16.3	16.7	2%
3.NONVIOLENT	5.8	5.6	-4%	7.2	7.3	2%	7.1	7.1	1%
4.DRUGS	6.3	6.3	-1%	8.6	8.4	-2%	8.3	8.1	-2%
5.DWI	4.1	4.1	-1%	4.3	4.5	4%	4.3	4.5	4%
TOTAL	8.2	8.2	-1%	13.1	12.7	-3%	12.7	12.4	-3%

There has been little change in average sentences since 1999.

Change in the Violent/Nonviolent Balance in the Institutional Population, 1999 to 2004

Females

Offense	1999	Percent	2004	Percent
Violent and Sex Offenses	517	26.0%	693	27.9%
Nonviolent offenses	1,475	74.0%	1,795	72.1%
Total	1,992	100.0%	2,488	100.0%

Males

Offense	1999	Percent	2004	Percent
Violent and Sex Offenses	12,234	50.4%	13,818	49.0%
Nonviolent offenses	12,037	49.6%	14,360	51.0%
Total	24,271	100.0%	28,178	100.0%

All Offenders

Offense	1999	Percent	2004	Percent
Violent and Sex Offenses	12,751	48.6%	14,511	47.3%
Nonviolent offenses	13,512	51.4%	16,155	52.7%
Total	26,263	100.0%	30,666	100.0%

The percent of the incarcerated population that has a most serious conviction for nonviolent offenses has increased from 51.4% in 1999 to 52.7% in 2004. The percent of females convicted of a violent offense has, however, increased from 26.0% in 1999 to 27.9% in 2004.

Violent offenses include homicide, robbery, assault, kidnapping, all sex offenses and child abuse, arson 1, armed criminal action and serious weapons offenses (felony class A and B). Nonviolent offenses are other offenses, including property offenses, drug offenses, DWI and public order offenses.

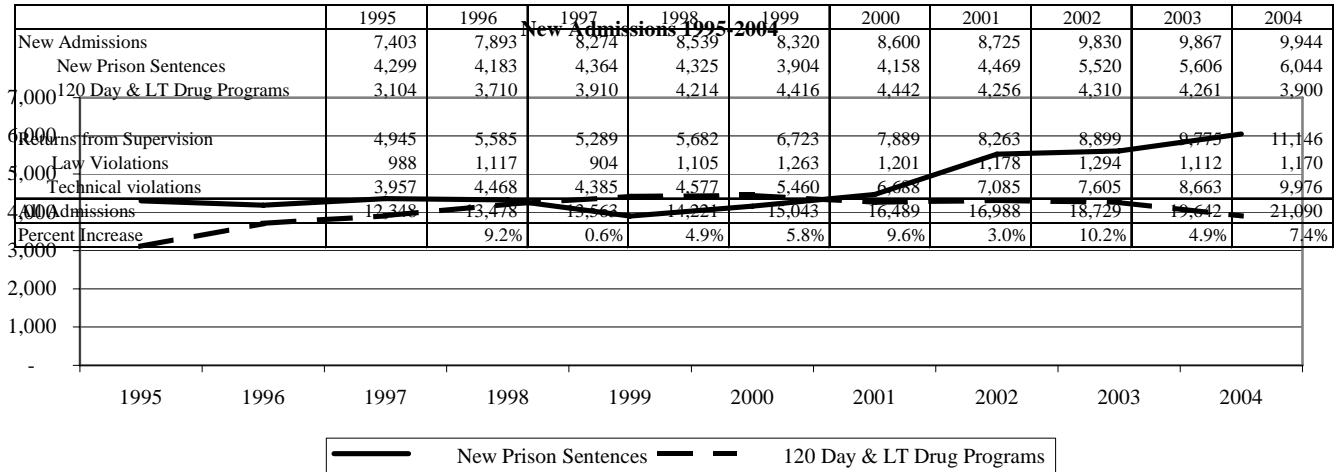
Changes in the Racial Composition 1999 to 2004

Race/	Females			Males			Total		
	1999	2004	% Chg.	1999	2004	% Chg.	1999	2004	% Chg.
Hispanic	1	5	400%	49	47	-4%	50	52	4%
Asian	775	740	-5%	10,908	11,748	8%	11,683	12,488	7%
Black	20	19	-5%	317	414	31%	337	433	28%
Hispanic	11	13	18%	103	121	17%	114	134	18%
Native Am.	-	1		2	12		2	13	
Unknown	1,185	1,710	44%	12,892	15,834	23%	14,077	17,544	25%
White	1,992	2,488	25%	24,271	28,178	16%	26,263	30,666	17%
TOTAL									

The Hispanic population has increased the most since 1999 (28%) compared to an average increase of 17%. The Black population has increased less than the average for males and has declined for females. There has been a 44% increase in the White female population and a 23% increase in the White male population.

Admissions to Prison 1995-2004

All Offenders



Increase in Prison Admissions (1995-2004)

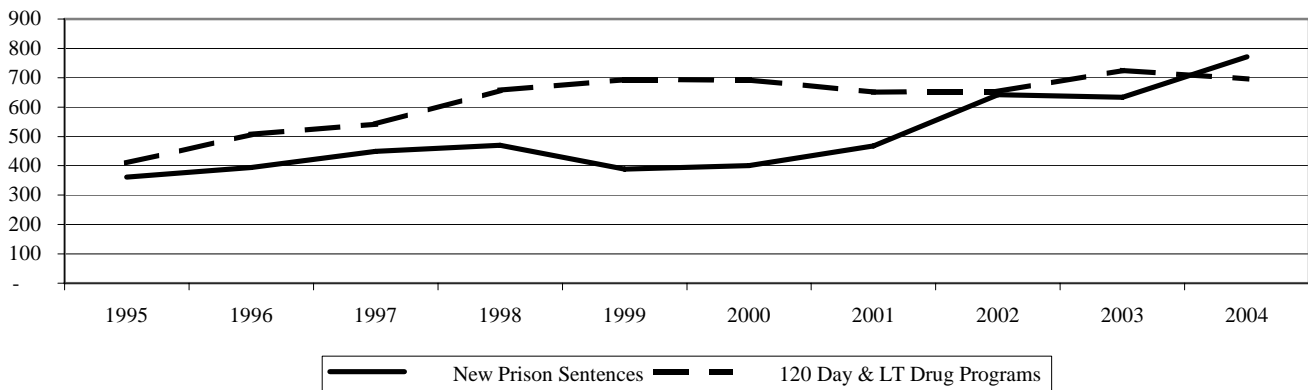
	Annual Percent Increase	
	1995-2001	2001-2004
New Admissions	3.1%	3.8%
New Prison Sentences	-0.5%	10.1%
120 Day & LT Drug Programs	7.6%	-3.1%
Returns from Supervision	10.1%	9.1%
Law Violations	5.1%	-0.2%
Technical violations	11.4%	10.6%
All Admissions	6.0%	6.4%

Admissions to prisons have increased at 6.4% per year in the last four years compared to 6.0% from 1995 to 2001. What is of significance to the department, because of the impact upon the prison bed capacity, is the increase in new admissions who are sentenced to a prison sentence. In the 1990s new term admissions were flat but since 2001 the annual increase has been 10.1%.

Female Offenders

	1995	1996	1997	1998	1999	2000	2001	2002	2003	2004
New Admissions	770	901	991	1,127	1,081	1,093	1,119	1,295	1,358	1,467
New Prison Sentences	361	394	449	470	388	401	468	642	633	772
120 Day & LT Drug Programs	409	507	542	657	693	692	651	653	725	695
Returns from Supervision	462	522	505	614	754	863	930	1,006	1,082	1,318
Law Violations	41	54	33	67	90	71	70	45	53	76
Technical violations	421	468	472	547	664	792	860	961	1,029	1,242
All Admissions	1,232	1,423	1,496	1,741	1,835	1,956	2,049	2,301	2,440	2,785
Percent Increase		15.5%	5.1%	16.4%	5.4%	6.6%	4.8%	12.3%	6.0%	14.1%

New Female Admissions 1995-2004



Increase in Prison Female Admissions (1995-2004)

	Annual Percent Increase	
	1995-2001	2001-2004
New Admissions	7.6%	7.7%
New Prison Sentences	2.7%	18.6%
120 Day & LT Drug Programs	11.5%	0.3%
Returns from Supervision	13.7%	11.3%
Law Violations	21.8%	6.0%
Technical violations	13.7%	12.0%
All Admissions	9.8%	9.3%

The increase in the number of females admitted to prison has been much higher than the increase in the number of males (9.3% per year compared to 6.3% per year for males since 2001). Since 2001 new female admissions sentenced to a prison sentence have increased at 18.6% per year and this has placed great pressure on the available prison capacity for female offenders.

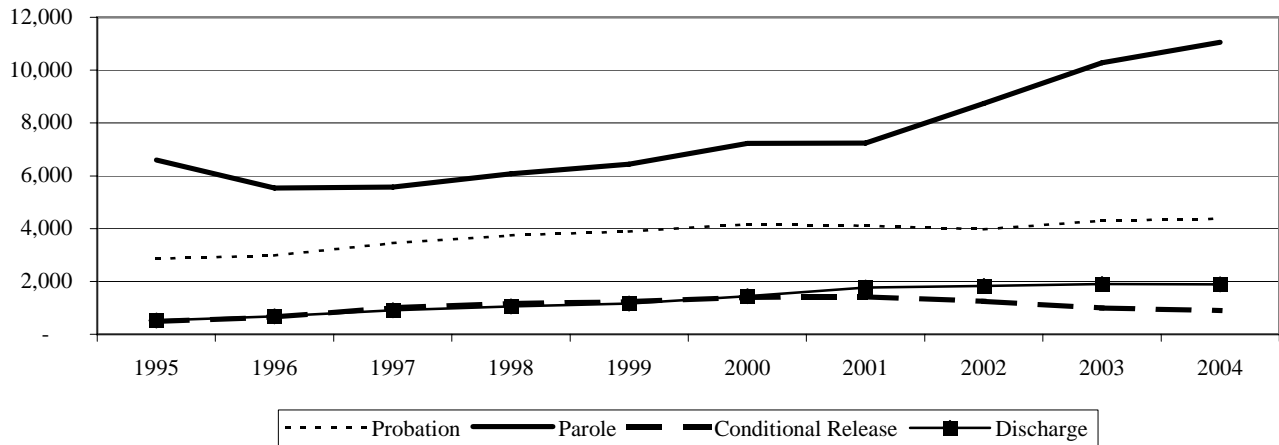
Releases From Prison, 1995-2004

All Releases

	1995	1996	1997	1998	1999	2000	2001	2002	2003	2004
Probation	2,860	2,984	3,447	3,746	3,881	4,167	4,100	3,975	4,301	4,368
Parole	6,605	5,539	5,575	6,081	6,439	7,228	7,241	8,739	10,276	11,050
Conditional Release	488	659	1,011	1,165	1,238	1,394	1,416	1,243	987	896
Absconders	561	697	644	907	971	1,190	1,207	1,495	2,106	1,961
Discharge	519	674	911	1,053	1,160	1,439	1,765	1,830	1,900	1,886
Total Releases	11,033	10,553	11,588	12,952	13,689	15,418	15,729	17,282	19,570	20,161
Percent Increase		-4.4%	9.8%	11.8%	5.7%	12.6%	2.0%	9.9%	13.2%	3.0%

Releases from prison have nearly doubled since 1995

Authorised Releases From Prison, 1995-2004

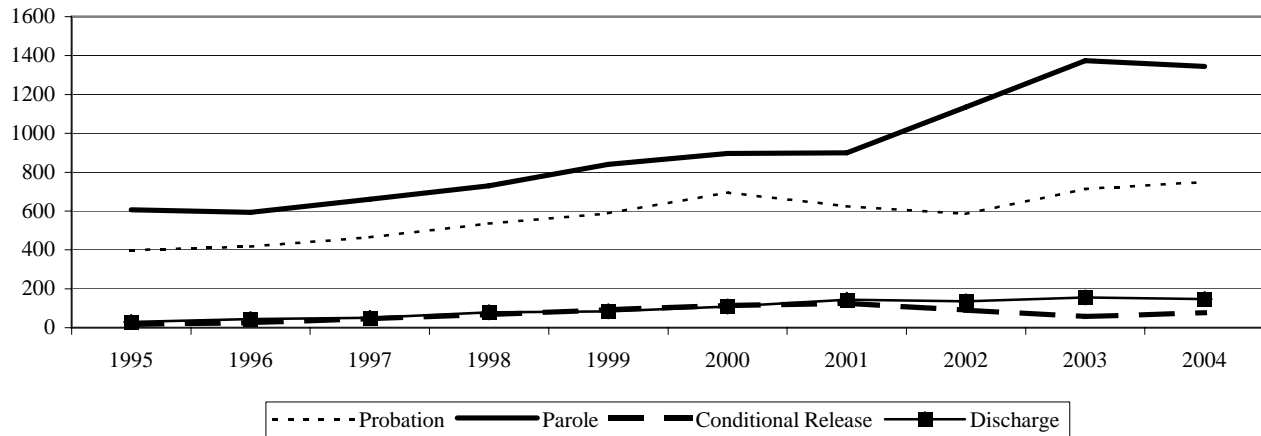


Since the introduction of the new salient factor guideline assessment there has been an increase in the number of offenders released to parole and a reduction in the number of offenders released on the conditional release date (the mandatory release date) or on the expiration of sentence.

Female Releases

	1995	1996	1997	1998	1999	2000	2001	2002	2003	2004
Probation	398	417	464	535	588	696	624	585	714	749
Parole	607	593	661	730	840	896	899	1136	1375	1344
Conditional Release	17	26	46	67	93	114	125	90	57	77
Absconders	36	61	65	103	107	146	129	160	223	188
Discharge	30	44	51	79	84	108	144	135	155	146
Total Releases	1,088	1,141	1,287	1,514	1,712	1,960	1,921	2,106	2,524	2,504
Percent Increase		4.9%	12.8%	17.6%	13.1%	14.5%	-2.0%	9.6%	19.8%	-0.8%

Authorised Female Releases From Prison, 1995-2004



The number of females released to parole has more than doubled since 1995 while the number of female offenders released on the conditional date have, since 2001, been reduced.

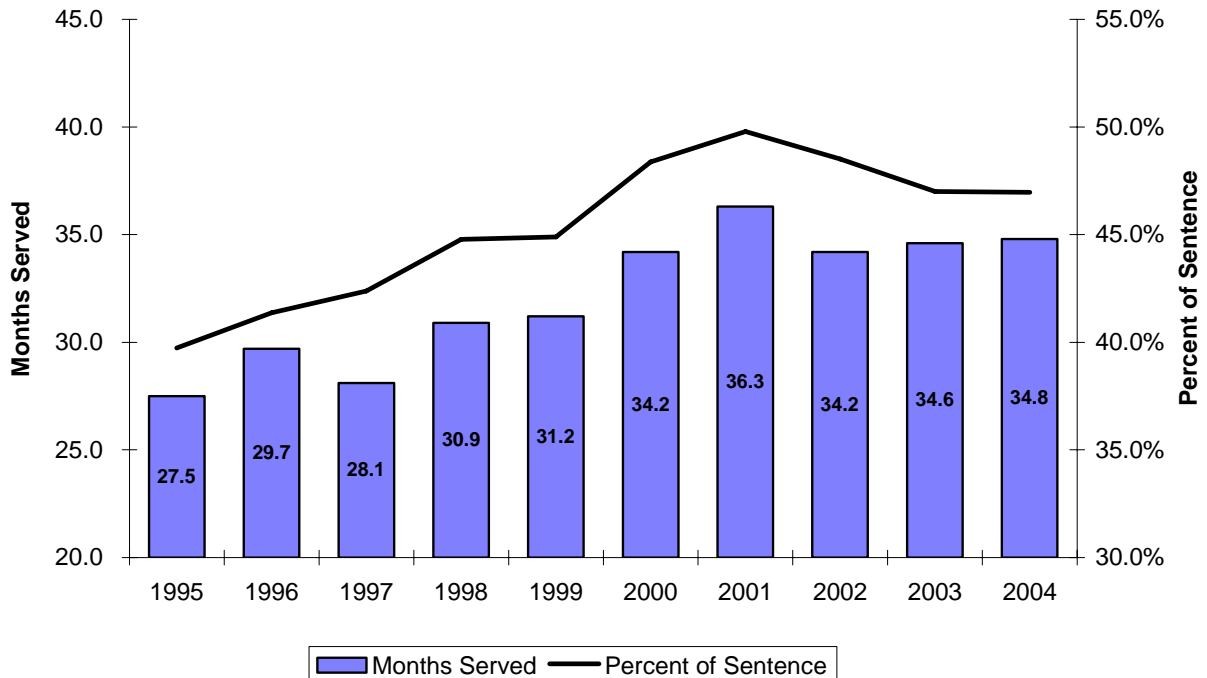
Time Served by Offenders on First Release

Time served as a percent of the sentence has been reduced in the last three years. The reduction has been made for offenders serving nonviolent offenses and has been supported by the introduction of a new salient factor risk assessment. The new risk measure has helped the Board of Probation and Parole assess the risk of offenders re-offending.

**Time Served to First Release to Parole, Conditional Release or Discharge
1995-2004**

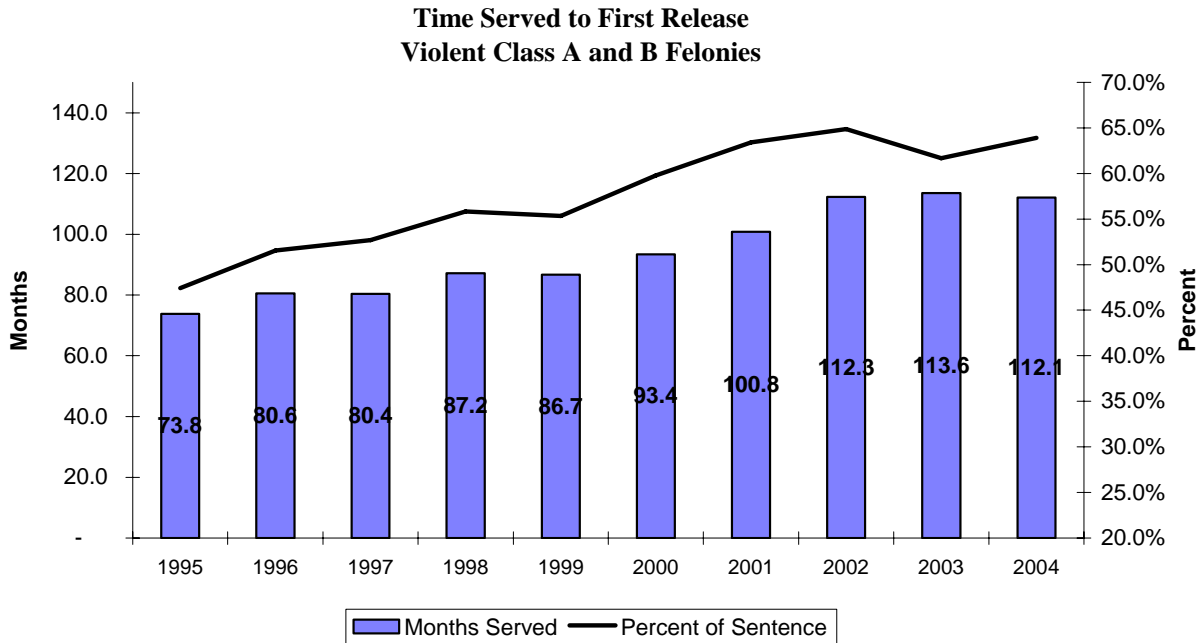
Year	Releases	Agg. Sentence (months)	Time Served (months)	Time Served as % of Sentence	Percent Released to Parole	Percent Released CR, Adm	Percent Released Discharge
1995	3,501	69.2	27.5	39.7%	89.5%	9.6%	0.8%
1996	3,092	71.8	29.7	41.4%	86.9%	12.1%	1.0%
1997	3,167	66.3	28.1	42.4%	84.6%	14.4%	1.0%
1998	3,539	69.0	30.9	44.8%	83.6%	14.4%	2.0%
1999	3,531	69.5	31.2	44.9%	81.1%	15.4%	3.5%
2000	3,653	70.7	34.2	48.4%	78.1%	17.7%	4.2%
2001	3,771	72.9	36.3	49.8%	76.7%	17.2%	6.1%
2002	4,378	70.5	34.2	48.5%	79.8%	14.5%	5.8%
2003	4,723	73.6	34.6	47.0%	83.8%	10.8%	5.4%
2004	5,035	74.1	34.8	47.0%	84.5%	9.9%	5.6%

**Time Served to First Release
1995-2004**



**Time Served to First Release to Parole, Conditional Release or Discharge
A and B Violent Felonies**

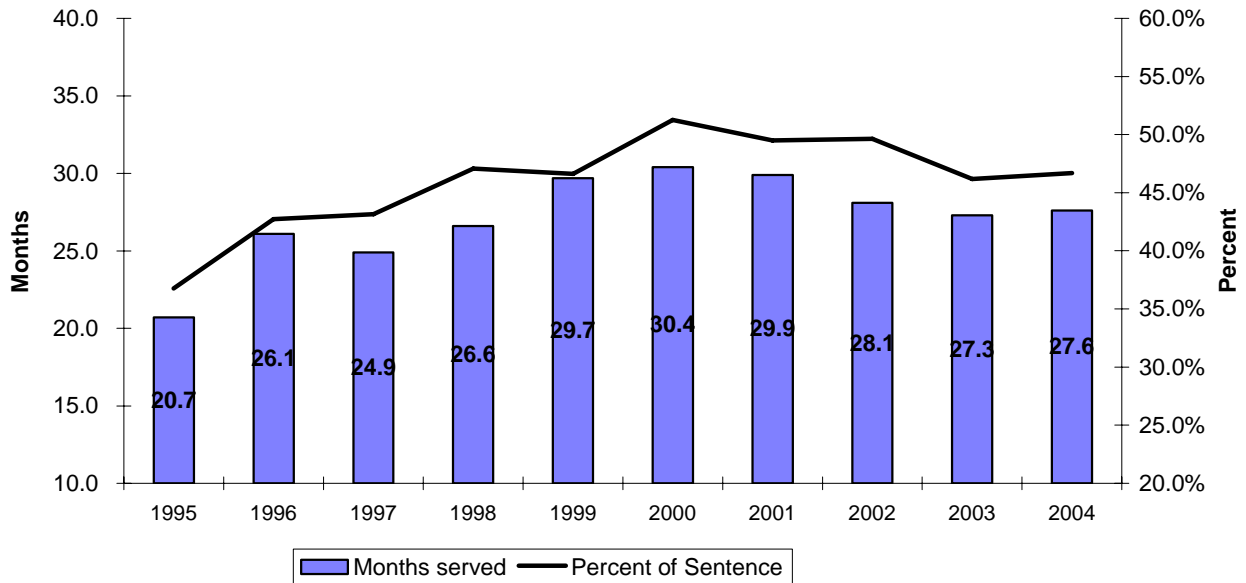
Year	Releases	Agg. Sentence (months)	Time Served (months)	Time Served as % of Sentence	Percent Released CR, Adm	Percent Released Discharge
1995	369	155.6	73.8	47.4%	11.7%	1.1%
1996	324	156.3	80.6	51.6%	11.7%	1.9%
1997	266	152.6	80.4	52.7%	24.4%	1.1%
1998	340	156.2	87.2	55.8%	22.1%	1.8%
1999	329	156.6	86.7	55.4%	31.0%	3.0%
2000	362	156.2	93.4	59.8%	35.1%	5.2%
2001	356	158.9	100.8	63.4%	37.6%	7.9%
2002	354	173.1	112.3	64.9%	29.1%	5.9%
2003	413	184.2	113.6	61.7%	20.6%	5.1%
2004	463	175.4	112.1	63.9%	18.4%	6.5%



**Time Served to First Release to Parole, Conditional Release or Discharge
C and D Violent Offenses**

Year	Releases	Agg. Sentence (months)	Time Served (months)	Time Served as % of Sentence	Percent Released CR, Adm	Percent Released Discharge
1995	187	56.3	20.7	36.8%	24.0%	0.0%
1996	160	61.1	26.1	42.7%	47.2%	0.6%
1997	172	57.7	24.9	43.2%	44.2%	0.0%
1998	207	56.5	26.6	47.1%	33.8%	0.5%
1999	175	63.7	29.7	46.6%	24.4%	0.6%
2000	222	59.3	30.4	51.3%	18.2%	1.4%
2001	263	60.4	29.9	49.5%	16.5%	1.9%
2002	247	56.6	28.1	49.6%	18.2%	0.8%
2003	341	59.1	27.3	46.2%	13.2%	2.9%
2004	355	59.1	27.6	46.7%	13.8%	2.8%

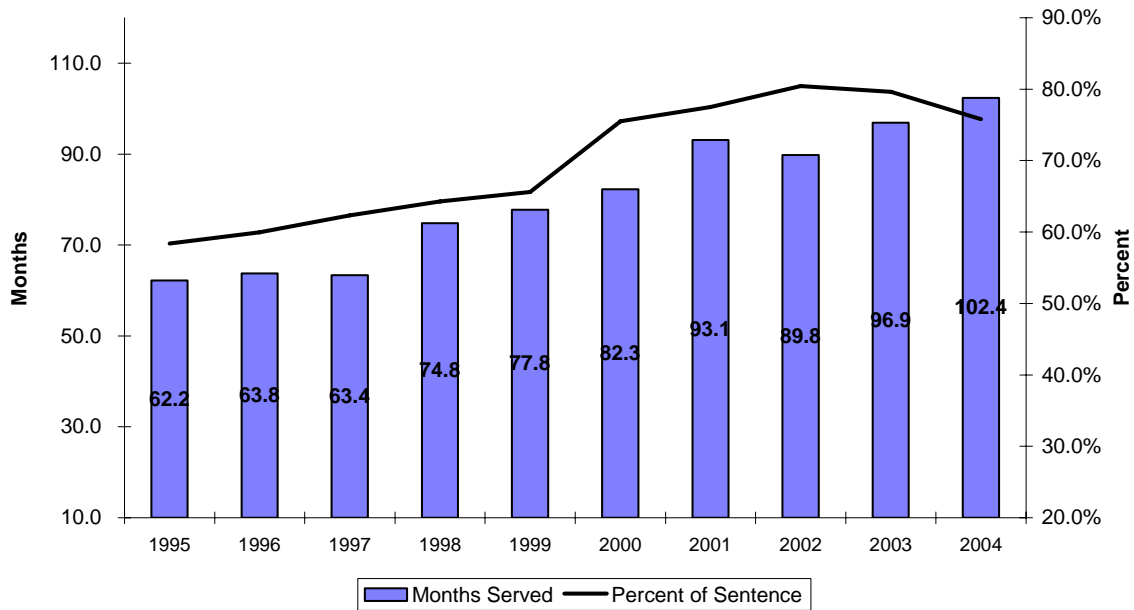
**Time Served to First Release
C and D Violent Offenses**



**Time Served to First Release to Parole, Conditional Release or Discharge
A and B Sex Offenses**

Year	Releases	Agg. Sentence (months)	Time Served (months)	Time Served as % of Sentence	Percent Released CR, Adm	Percent Released Discharge
1995	198	106.5	62.2	58.4%	22.7%	0.0%
1996	175	106.4	63.8	60.0%	24.9%	1.1%
1997	160	101.7	63.4	62.3%	18.2%	0.0%
1998	118	116.3	74.8	64.3%	25.9%	0.8%
1999	98	118.6	77.8	65.6%	33.1%	0.0%
2000	112	109.0	82.3	75.5%	31.6%	3.6%
2001	123	120.1	93.1	77.5%	29.0%	14.6%
2002	145	111.6	89.8	80.5%	25.9%	26.9%
2003	129	121.7	96.9	79.6%	30.5%	32.6%
2004	139	135.1	102.4	75.8%	26.5%	42.4%

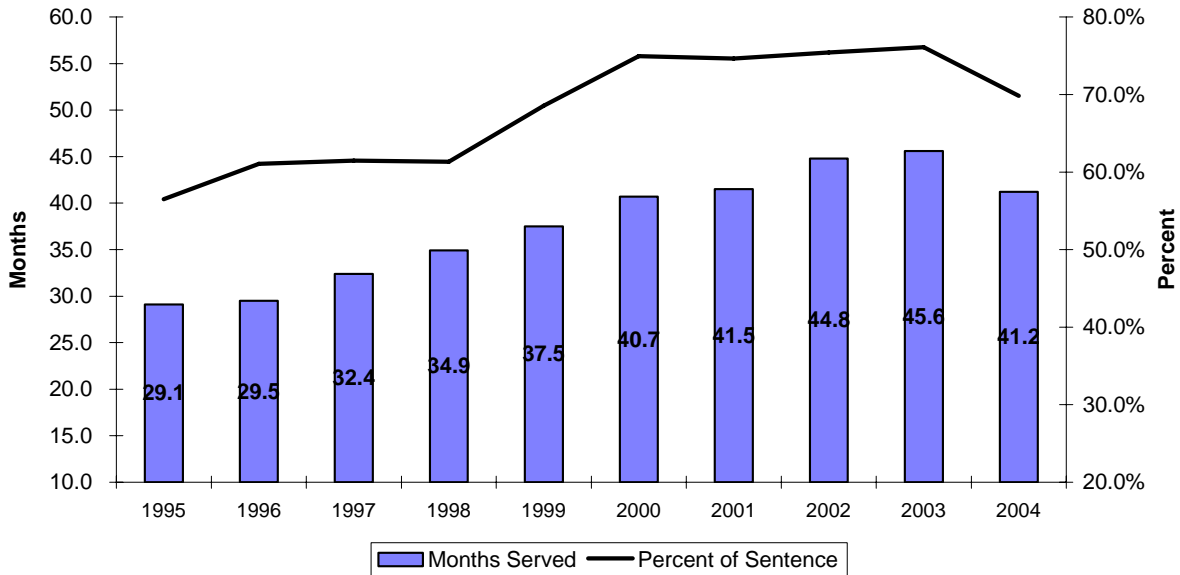
**Time Served to First Release
A and B Sex Offenses**



**Time Served to First Release to Parole, Conditional Release or Discharge
C and D Sex Offenses**

Year	Releases	Agg. Sentence (months)	Time Served (months)	Time Served as % of Sentence	Percent Released CR, Adm	Percent Released Discharge
1995	114	51.5	29.1	56.5%	39.4%	0.0%
1996	136	48.3	29.5	61.1%	32.1%	1.5%
1997	110	52.7	32.4	61.5%	26.5%	0.0%
1998	99	56.9	34.9	61.3%	30.9%	1.0%
1999	126	54.7	37.5	68.6%	25.7%	0.0%
2000	131	54.3	40.7	75.0%	27.0%	3.1%
2001	159	55.6	41.5	74.6%	22.5%	11.3%
2002	204	59.4	44.8	75.4%	18.4%	19.1%
2003	209	59.9	45.6	76.1%	18.9%	20.1%
2004	212	59.0	41.2	69.8%	17.4%	27.8%

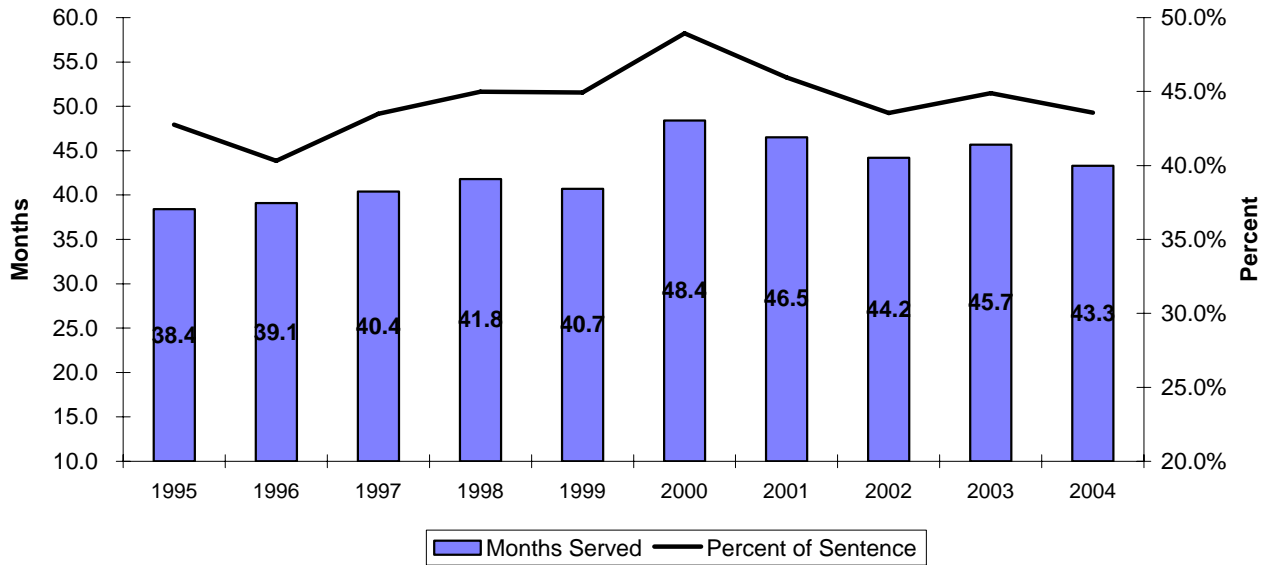
**Time Served to First Release
C and D Sex Offenses**



**Time Served to First Release to Parole, Conditional Release or Discharge
A and B Non-Violent Felonies**

Year	Releases	Agg. Sentence (months)	Time Served (months)	Time Served as % of Sentence	Percent Released CR, Adm	Percent Released Discharge
1995	551	89.8	38.4	42.8%	11.9%	1.3%
1996	506	97.0	39.1	40.3%	14.9%	1.4%
1997	469	92.9	40.4	43.5%	16.5%	0.9%
1998	531	92.9	41.8	45.0%	15.1%	1.7%
1999	572	90.6	40.7	44.9%	13.9%	0.5%
2000	530	98.9	48.4	48.9%	14.3%	2.6%
2001	656	101.2	46.5	45.9%	8.6%	2.4%
2002	680	101.5	44.2	43.5%	9.0%	2.2%
2003	758	101.8	45.7	44.9%	8.1%	1.6%
2004	868	99.4	43.3	43.6%	7.1%	1.8%

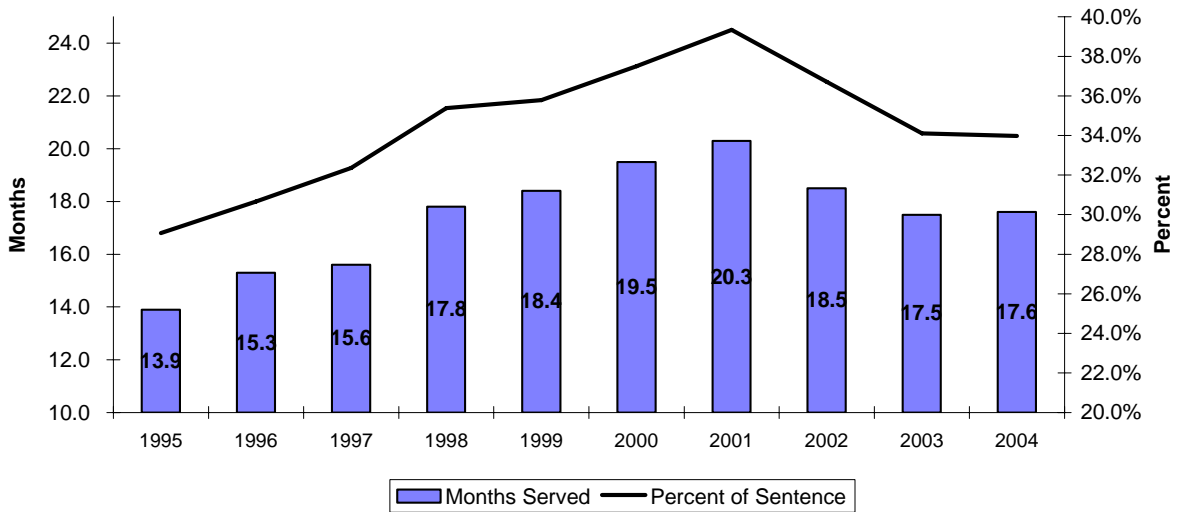
**Time Served to First Release
A and B non-violent felonies**



**Time Served to First Release to Parole, Conditional Release or Discharge
C and D Non Violent Felonies**

Year	Releases	Agg. Sentence (months)	Time Served (months)	Time Served as % of Sentence	Percent Released CR, Adm	Percent Released Discharge
1995	1912	47.8	13.9	29.1%	3.4%	0.4%
1996	1618	49.9	15.3	30.7%	4.7%	0.4%
1997	1793	48.2	15.6	32.4%	4.3%	0.2%
1998	1977	50.3	17.8	35.4%	4.1%	0.5%
1999	1959	51.4	18.4	35.8%	4.1%	0.2%
2000	2026	52.0	19.5	37.5%	3.7%	0.7%
2001	1978	51.6	20.3	39.3%	2.9%	0.8%
2002	2463	50.4	18.5	36.7%	2.5%	0.6%
2003	2610	51.3	17.5	34.1%	2.4%	0.5%
2004	2749	51.8	17.6	34.0%	2.2%	0.6%

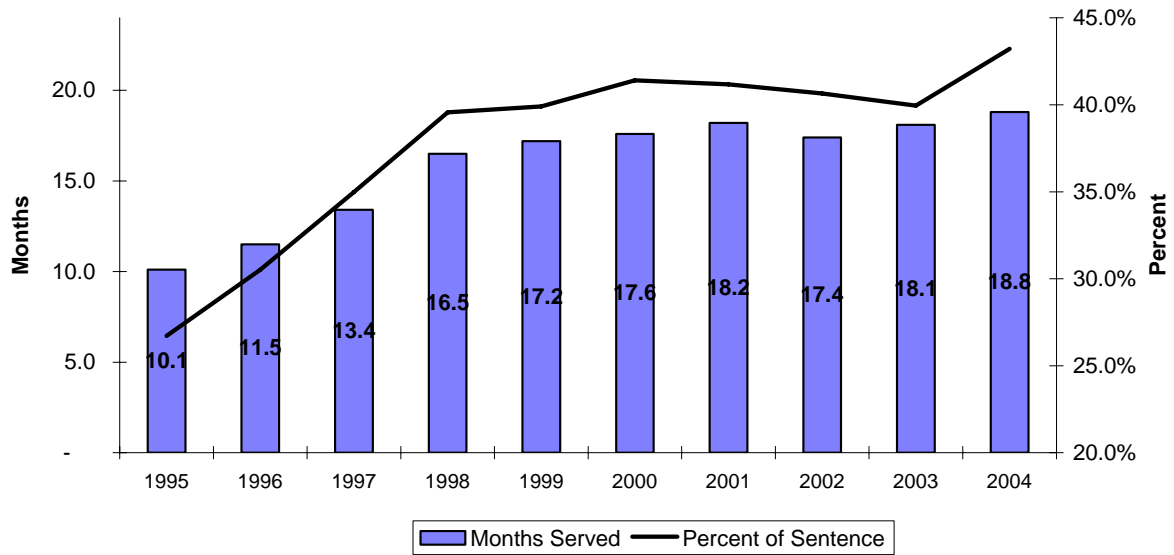
**Time Served to First Release
C and D Non-violent Felonies**



**Time Served to First Release to Parole, Conditional Release or Discharge
DWI**

Year	Releases	Agg. Sentence (months)	Time Served (months)	Time Served as % of Sentence	Percent Released CR, Adm	Percent Released Discharge
1995	170	37.8	10.1	26.7%	26.4%	0.0%
1996	173	37.7	11.5	30.5%	25.2%	1.2%
1997	197	38.3	13.4	35.0%	14.8%	0.0%
1998	267	41.7	16.5	39.6%	11.5%	0.4%
1999	272	43.1	17.2	39.9%	11.9%	0.0%
2000	270	42.5	17.6	41.4%	13.1%	1.5%
2001	236	44.2	18.2	41.2%	15.1%	7.6%
2002	285	42.8	17.4	40.7%	13.2%	13.7%
2003	263	45.3	18.1	40.0%	15.0%	16.0%
2004	249	43.5	18.8	43.2%	14.8%	23.7%

**Time Served to First Release
DWI**



**Time Served on First Release in 2004
Top Twenty Offenses**

Rank	Charge Code	Offense	First Releases	Average Sentence (mths)	Time Served (mths)	Percent Served	Released To:		
							Parole	Cond. Release	Discharged
1	32450	POSS CONTROLLED SUBSTANC	698	51.4	15.0	29.2%	658	22	18
2	32465	DIST DEL MANUF CONTR SUB	545	93.4	35.3	37.8%	508	33	4
3	14020	BURGLARY 2ND DEG	360	61.9	23.3	37.6%	328	16	16
4	18010	FORGERY	275	50.1	16.9	33.7%	253	17	5
5	15010	STEALING	266	58.7	23.4	39.9%	233	24	9
6	47410	DWI/ALCOHOL	243	43.4	19.0	43.8%	202	27	14
7	26031	NONSUP-6MO-12MO-AMT-\$500	199	42.1	11.0	26.1%	195	4	-
8	13031	ASSAULT 2ND DEGREE	196	59.6	27.1	45.5%	153	33	10
9	12010	ROBBERY 1ST DEGREE	151	202.1	126.6	62.6%	117	26	8
10	23015	TAMP 1ST W MTRVEH-AIRPLN	141	45.8	17.6	38.4%	128	10	3
11	12020	ROBBERY 2ND DEGREE	139	104.1	52.5	50.4%	118	15	6
12	31010	ARMED CRIMINAL ACTION	87	110.5	70.1	63.4%	54	23	10
13	14010	BURGLARY 1ST DEG	77	82.6	42.0	50.8%	60	14	3
14	15021	THEFT-\$500/MORE-LESS \$25	77	44.8	10.8	24.1%	76	1	-
15	31020	UNLAWFUL USE OF WEAPON	75	41.7	17.9	42.9%	64	9	2
16	32500	TRAFFIC IN DRUG 2ND DEG	75	84.6	36.5	43.1%	67	5	3
17	13029	DOMESTIC ASSAULT 2ND DEG	69	49.4	20.9	42.3%	60	6	3
18	19010	PASSING A BAD CHECK	62	41.5	11.8	28.4%	58	3	1
19	10031	MURDER 2ND DEGREE	60	240.6	160.1	66.5%	40	17	3
20	24010	RCVNG STLN PROP \$150 MRE	55	62.3	24.1	38.7%	44	8	3